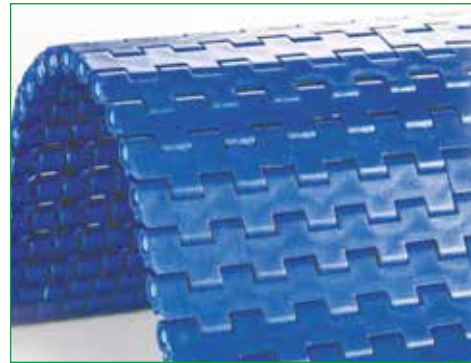


PITCH 12,7 mm / 0,5"

Belt type: closed flat top surface
Pin diameter: Ø 4,6 mm
Open area: 0%
Hole openings: -
Minimum width: 50 mm
Thickness: 10 mm
Accessories: flight
Food Certification: FDA - EU



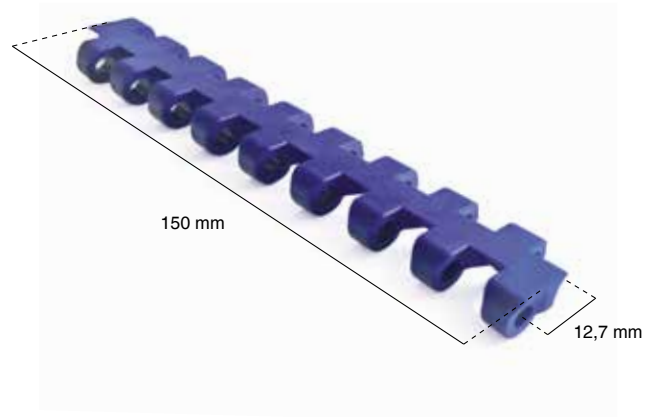
Standard executions

Belt material	Belt color	Pin
POM	Blue	Nylon
PP	Blue	POM

Other materials and colors are available upon request.

Belt material	Pin material	Belt performance [N/m]	Temperature range [°C]	Certification	Weight [kg/m ²]
PP	PP	11550	+5 ÷ +90	FDA - EU	4,75
PE	PE	7000	-73 ÷ +66	FDA - EU	5,00
POM	POM	16800	-43 ÷ +70	FDA - EU	7,10
POM	PA	17000	-40 ÷ +80	FDA - EU	6,90
POM	PP	16000	+5 ÷ +70	FDA - EU	6,90

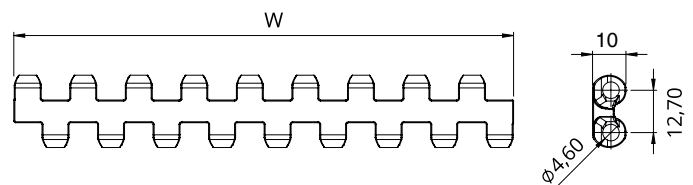
PP = Polypropylene - PE = Polyethylene - POM = Acetal Resin - PA = Polyamide



Belt width [W]

Minimum [mm]	Standard increment [mm]	Special increment [mm]	Width tolerance* [mm]
50	Multiple: 50	Multiple: 16,70	+/-2 up to 300
			+/-3 up to 600
			+/-4 more than 600

*It is advisable to consider dimensional variations in width based on operating temperatures and humidity when the belt is made of polyamide.



Part number

NMEC 127 C -PO -B

Type _____
 Pitch _____
 Closed flat top surface _____

Belt color: B = blue _____

Belt material:
 PO = POM - Acetic Acid / PP = Polypropylene
 PE = Polyethylene / PA = Polyamide

NMEC127FG

PITCH 12,7 mm / 0,5"

STRAIGHT MODULAR BELTS

Belt type: open flat surface flush grid

Pin diameter: Ø 4,6 mm

Open area: 20%

Hole openings: 3x6 mm

Minimum width: 50 mm

Thickness: 9 mm

Accessories: flight

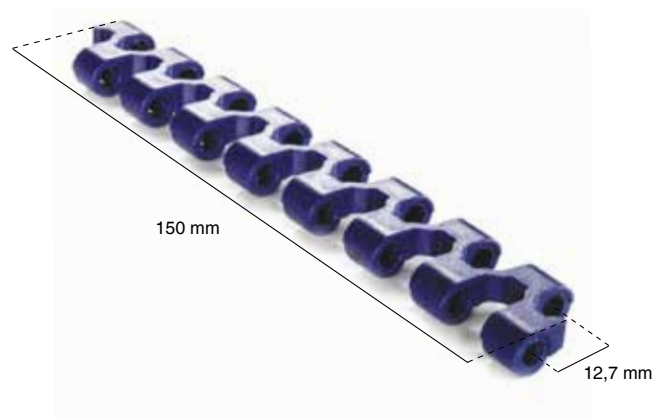
Food Certification: FDA - EU



Standard executions

Belt material	Belt color	Pin
POM	Blue	PA
PP	Blue	POM

Other materials and colors are available upon request.

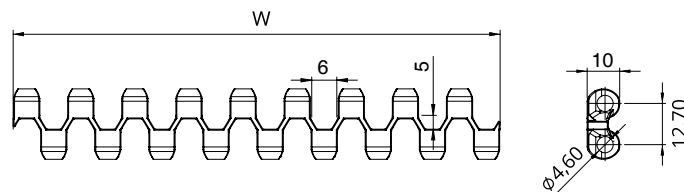


Belt material	Pin material	Belt performance [N/m]	Temperature range [°C]	Certification	Weight [kg/m²]
PP	PP	10900	+5 ÷ +90	FDA - EU	4,30
PE	PE	6300	-73 ÷ +66	FDA - EU	4,90
POM	POM	16000	-43 ÷ +70	FDA - EU	6,30
POM	PA	16200	-40 ÷ +80	FDA - EU	6,00
POM	PP	15200	+5 ÷ +70	FDA - EU	5,90

PP = Polypropylene - PE = Polyethylene - POM = Acetal Resin - PA = Polyamide

Belt width [W]

Minimum [mm]	Standard increment [mm]	Special increment [mm]	Width tolerance* [mm]
50	Multiple: 50	Multiple: 16,70	+/-2 up to 300
			+/-3 up to 600
			+/-4 more than 600



*It is advisable to consider dimensional variations in width based on operating temperatures and humidity when the belt is made of polyamide.

Part number

NMEC 127 FG -PO -B

Type

Pitch

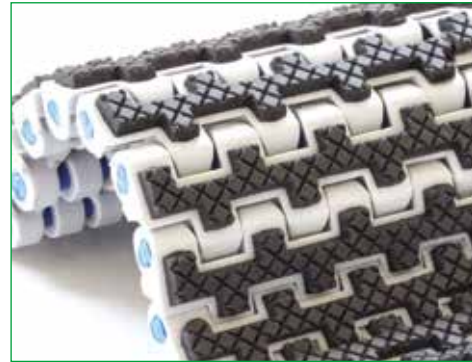
Open flat surface flush grid

Belt color: B = blue

Belt material:
PO = POM - Acetic Acid / PP = Polypropylene
PE = Polyethylene / PA = Polyamide

PITCH 12,7 mm / 0,5"

- Belt type:** closed surface with rubber top insert
- Pin diameter:** Ø 4,6 mm
- Open area:** 0%
- Rubber hardness:** 50 Sh A, oil resistant
- Minimum width:** 50 mm
- Thickness:** 9 mm
- Accessories:** flights
- Certificazione alimentare:** EU for white color



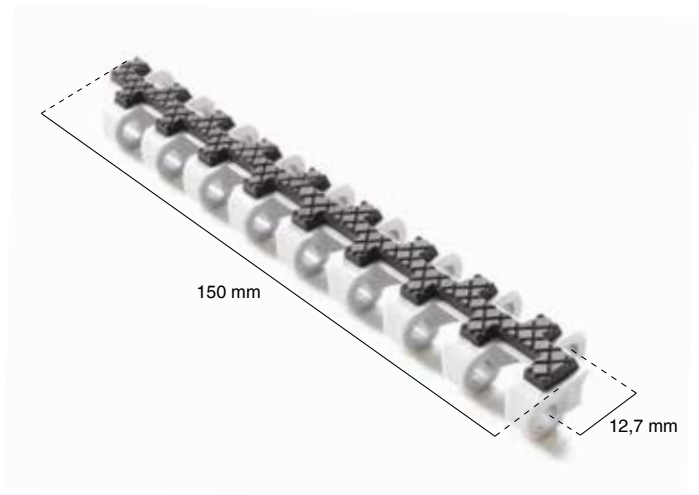
Standard executions

Belt material	Belt color	Insert colour	Pin
PP	Grey	Black	POM
PP	Grey	Black	POM

Other materials and colors are available upon request.

Belt material	Pin material	Belt performance [N/m]	Temperature range [°C]	Certification	Weight [kg/m²]
PP	PP	10900	+5 ÷ +90	FDA - EU	5,10

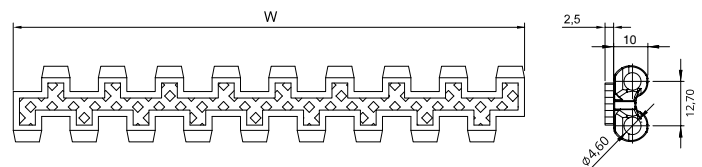
PP = Polypropylene - PE = Polyethylene - POM = Acetal Resin - PA = Polyamide



Belt width [W]

Minimum [mm]	Standard increment [mm]	Special increment [mm]	Width tolerance* [mm]
50	Multiple: 50	Multiple: 16,70	+/-2 fino a 300
			+/-3 fino a 600
			+/-4 oltre 600

*It is advisable to consider dimensional variations in width based on operating temperatures and humidity when the belt is made of polyamide.



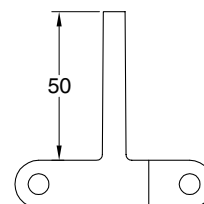
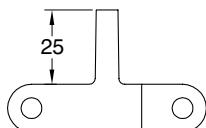
Part Number

NMEC 127 GT -PP -G

Type _____
 Pitch _____
 Closed surface with rubber top insert _____

Belt color: G = gray
 W = white _____
 Belt material: PP = Polypropylene _____

NMEC127 type accessories



Flights

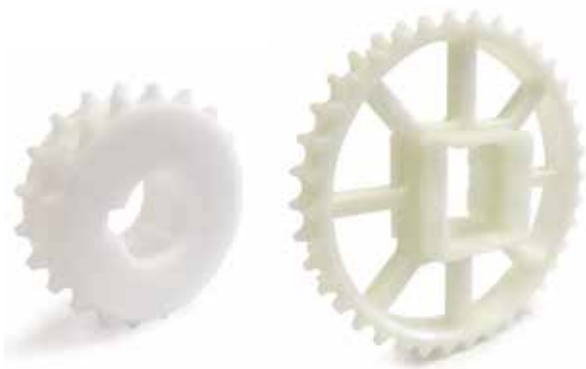
In case of need of flights the following table shows the standard indent. it is possible to have a special indent according to specific customer request.



Standard indent [mm]	Z	33	50	67	83
-----------------------------	---	----	----	----	----

In the case of wide belts, one or more gaps is recommended between flights to allow the belt to be supported on the return path. The maximum width not supported by guides depends on several factors such as the load on the belt, possible incline of the conveyor, and belt or pin material.

SPROCKETS for the series NMEC127



Teeth nr.	Dp [mm]	Do [mm]	A [mm]	B [mm]	Fori disponibili standard	
					Quadrato [mm]	Ø tondo + cava UNI
19	77,3	78,1	30,3	3,5	40x40	20 - 25 - 30
24	97,6	99,0	30,3	3,5	40x40	20 - 25 - 30
28	113,9	115,3	30,3	3,5	40x40	25 - 30
30	122,0	123,4	30,3	3,5	40x40	25 - 30
36	146,4	147,9	30,3	3,5	40x40	25 - 30

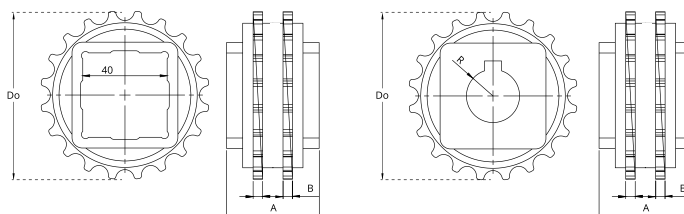
Part number NSEC127 -Q 40 -Z24

Type _____

Hole type: R = round / Q = square _____

Hole size (mm) _____

Number of teeth _____

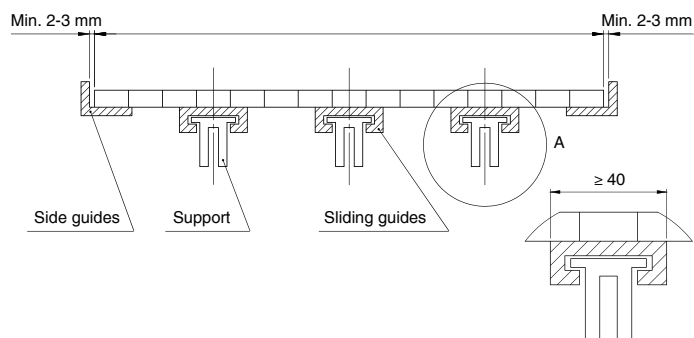


Belt width [mm]		150	200	250	300	350	400	450	500	550	600	650	700	750		
Number of sprockes	Drive shaft	Belt tension ≤ 50% of the capacity		2	2	3	3	4	4	5	5	6	6	7	7	8
		Belt tension = 100% of the capacity		3	3	4	5	6	8	9	10	11	12	13	14	15
	Driven shaft		2	2	2	2	2	2	3	3	3	3	4	4	4	
Sliding guides		2	2	3	3	3	4	4	4	5	5	5	6	6		

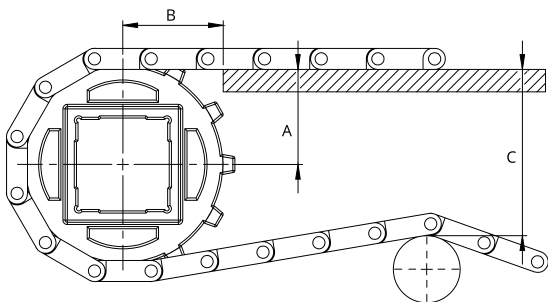
Belt width [mm]		800	850	900	950	1000	1050	1100	1150	1200	1250	1300	1350	1400		
Number of sprockes	Drive shaft	Belt tension ≤ 50% of the capacity		8	9	9	10	10	11	11	12	12	13	13	14	14
		Belt tension = 100% of the capacity		15	16	17	18	19	20	21	22	23	24	25	26	27
	Driven shaft		4	4	5	5	5	5	6	6	7	7	8	8	8	
Sliding guides		6	7	7	7	8	8	8	9	9	9	10	10	11		

Mounting

When mounting the sprockets, make sure that you have mounted all sprockets oriented in the same phase. Only axially lock the central sprocket and leave the other sprockets free to move axially



SPROCKES for the series NMEC127

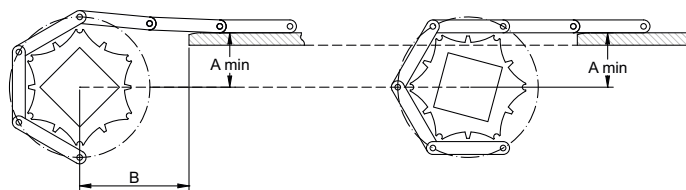
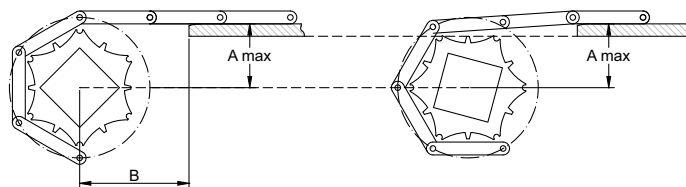


Model	Z [mm]	A _{max} [mm]	A _{min} [mm]	B1 [mm]	B2 [mm]	C _{max} [mm]
NMEC127C	19	34,4	34,0	40	15	70
	24	44,8	44,4	43	15	90
	28	52,9	52,6	47	15	105
NMEC127FG	30	57,3	57,0	49	15	113
	36	70,0	68,8	53	15	137

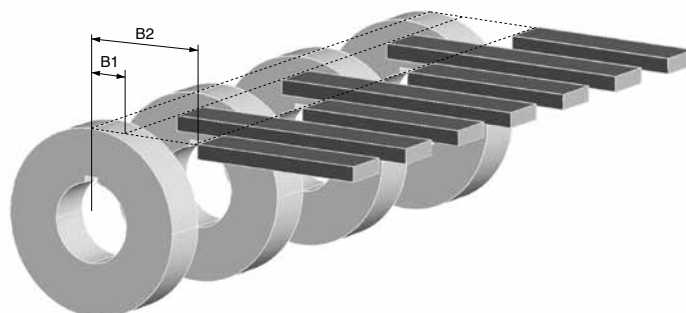
A_{max} = sliding surface position so that the height of the belt engaging the sprocket oscillates between the sliding surface height and a lower one. The height variation depends on the number of teeth and the pitch of the sprocket.

A_{min} = sliding surface position so that the height of the belt engaging the sprocket oscillates between the sliding surface height and a higher one. The height variation depends on the number of teeth and the pitch of the sprocket.

The choice of A dimensions depends on the items you have to carry. it is always suggested to make a chamfer at the end of the sliding guides.

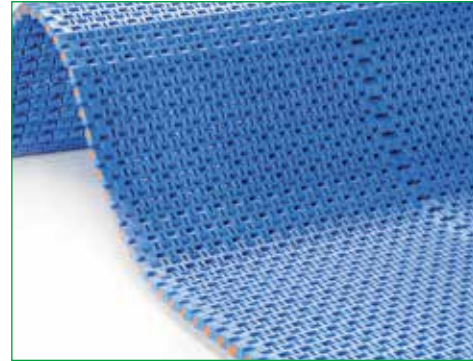


In order to avoid any subsidence of the belt in the area between the guiding strip and the sprockets, it is possible to locate the guides between the sprockets. Two minimum B1 and B2 dimensions are defined.



PITCH 12,7 mm / 0,5"

Belt type: open flat surface flush grid
Pin diameter: Ø 4,6 mm
Open area: 14%
Hole openings: 1,7x5,5 mm
Minimum width: 106 mm
Thickness: 8,5 mm
Accessories: -
Food Certification: FDA - EU



Standard executions

Belt material	Belt color	Pin
POM	Blue - White	PA

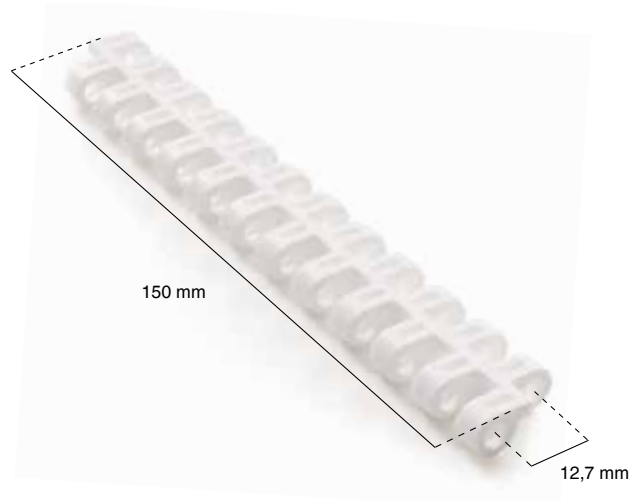
Other materials and colors are available upon request.

Product Specifications

Narrow transfer: min diameter 20 mm

Belt material	Pin material	Belt performance [N/m]	Temperature range [°C]	Certification	Weight [kg/m ²]
PP	PP	9630	+5 ÷ +90	FDA - EU	7,70
PE	PE	8750	-73 ÷ +66	FDA - EU	4,10
POM	POM	14300	-43 ÷ +70	FDA - EU	5,90
POM	PA	15400	-40 ÷ +80	FDA - EU	5,70
POM	PP	12500	+5 ÷ +70	FDA - EU	5,70

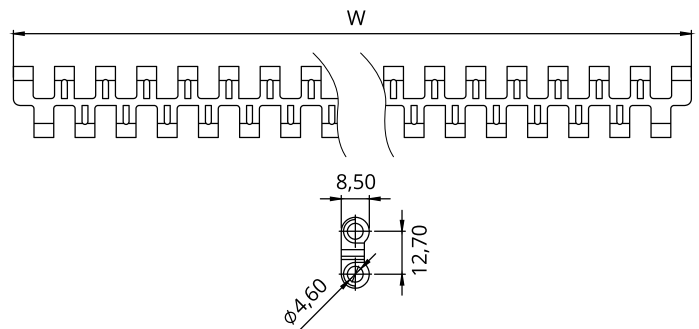
PP = Polypropylene - PE = Polyethylene - POM = Acetal Resin - PA = Polyamide



Belt width [W]

Minimum [mm]	Standard increment [mm]	Special increment [mm]	Width tolerance* [mm]
108	Multiple: 25	-	+/-2 up to 300
			+/-3 up to 600
			+/-4 more than 600

*It is advisable to consider dimensional variations in width based on operating temperatures and humidity when the belt is made of polyamide.



Part number

NMMD 127 WFG -PO -W

Type _____
 Pitch _____
 Open flat surface flush grid

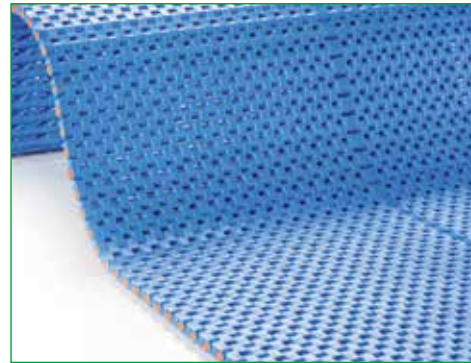
Belt color: W = white / B = blue
 Belt material:
 PO = POM - Acetic Acid / PP = Polypropylene
 PE = Polyethylene / PA = Polyamide

NMMD127WC

PITCH 12,7 mm / 0,5"

STRAIGHT MODULAR BELTS

- Belt type:** closed flat top surface
- Pin diameter:** Ø 4,6 mm
- Open area:** 4%
- Hole openings:** -
- Minimum width:** 106 mm
- Thickness:** 8,5 mm
- Accessories:** -
- Food Certification:** FDA - EU



Standard executions

Belt material	Belt color	Pin
POM	Blue - White	PA

Other materials and colors are available upon request.

Product Specifications

Narrow transfer: min diameter 20 mm

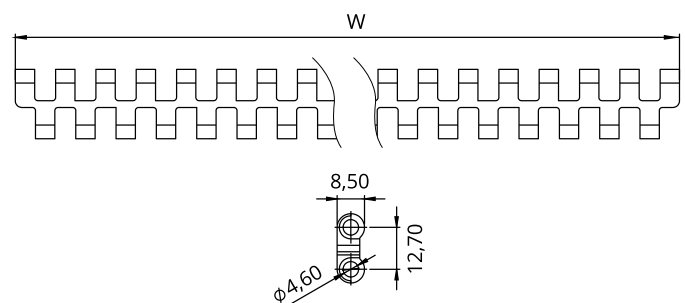
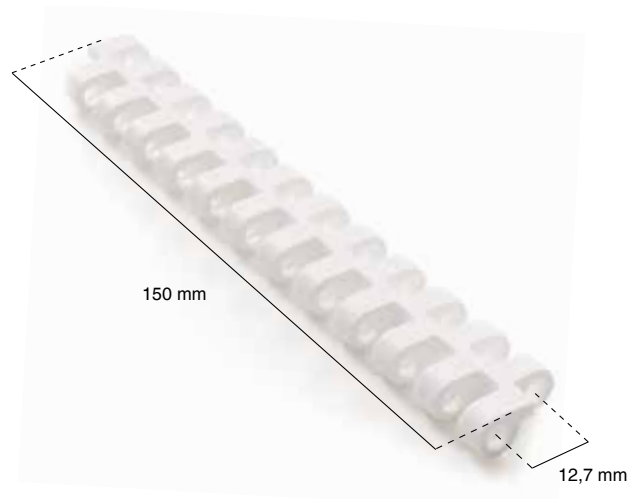
Belt material	Pin material	Belt performance [N/m]	Temperature range [°C]	Certification	Weight [kg/m ²]
PP	PP	9630	+5 ÷ +90	FDA - EU	4,30
PE	PE	8750	-73 ÷ +66	FDA - EU	4,80
POM	POM	14300	-43 ÷ +70	FDA - EU	6,90
POM	PA	15300	-40 ÷ +80	FDA - EU	6,70
POM	PP	12800	+5 ÷ +70	FDA - EU	6,70

PP = Polypropylene - PE = Polyethylene - POM = Acetal Resin - PA = Polyamide

Belt width [W]

Minimum [mm]	Standard increment [mm]	Special increment [mm]	Width tolerance* [mm]
108	Multiple: 25	-	+/-2 up to 300
			+/-3 up to 600
			+/-4 more than 600

*It is advisable to consider dimensional variations in width based on operating temperatures and humidity when the belt is made of polyamide.



Part number

NMMD 127 WC -PO -W

Type _____
 Pitch _____
 Closed flat top surface _____

Belt color: W = white / B = blue

Belt material:
 PO = POM - Acetic Acid / PP = Polypropylene
 PE = Polyethylene / PA = Polyamide

PITCH 25,4 mm / 1"

Belt type: closed flat top surface
Pin diameter: \varnothing 4,9 mm
Open area: 0%
Hole openings: -
Minimum width: 152,4 mm
Thickness: 10 mm
Accessories: flights - side wall
Food Certification: FDA - EU



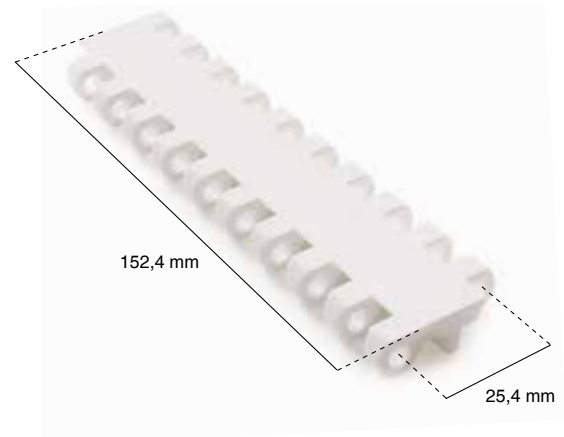
Standard executions

Belt material	Belt color	Pin
PP	White - blue	PP
PE	Blue	POM

Other materials and colors are available upon request.

Belt material	Pin material	Belt performance [N/m]	Temperature range [°C]	Certification	Weight [kg/m²]
PP	PP	11700	+5 ÷ +90	FDA - EU	4,50
PE	PE	10500	-73 ÷ +66	FDA - EU	5,00
POM	POM	14600	-43 ÷ +70	FDA - EU	6,60
POM	PA	15700	-40 ÷ +80	FDA - EU	6,40
POM	PP	12900	+5 ÷ +70	FDA - EU	6,40

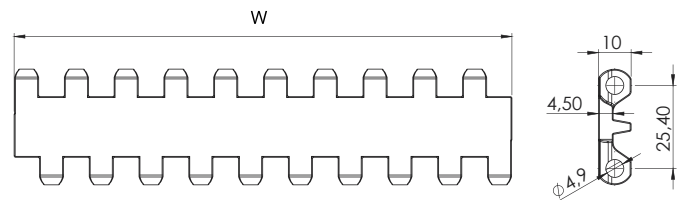
PP = Polypropylene - PE = Polyethylene - POM = Acetal Resin - PA = Polyamide



Belt width [W]

Minimum [mm]	Standard increment [mm]	Special increment [mm]	Width tolerance* [mm]
152,4	Multiple: 76,2	Multiple: 15,24	+/-2 up to 300
			+/-3 up to 600
			+/-4 more than 600

*It is advisable to consider dimensional variations in width based on operating temperatures and humidity when the belt is made of polyamide.



Part number	NMEC 254 C -PO -W	
Type		Belt color: W = white / B = blue
Pitch		Belt material: PO = POM - Acetic Acid / PP = Polypropylene PE = Polyethylene / PA = Polyamide
Closed flat top surface		

NMEC254P16

PITCH 25,4 mm / 1"

STRAIGHT MODULAR BELTS

- Belt type:** flat open surface
- Pin diameter:** Ø 4,9 mm
- Open area:** 16%
- Hole openings:** 2,5x3,7 mm
- Minimum width:** 152,4
- Thickness:** 10 mm
- Accessories:** flights - side wall
- Food Certification:** FDA - EU



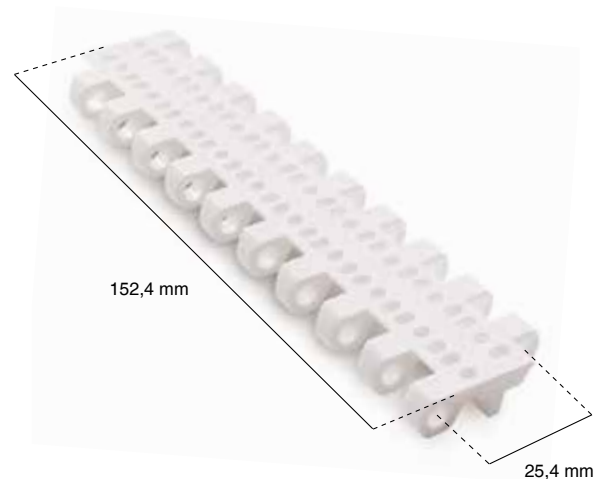
Standard executions

Belt material	Belt color	Pin
PP	White - blue	PP
PE	Blue	POM

Other materials and colors are available upon request.

Belt material	Pin material	Belt performance [N/m]	Temperature range [°C]	Certification	Weight [kg/m ²]
PP	PP	9360	+5 ÷ +90	FDA - EU	3,80
PE	PE	8500	-73 ÷ +66	FDA - EU	4,20
POM	POM	13100	-43 ÷ +70	FDA - EU	5,70
POM	PA	14000	-40 ÷ +80	FDA - EU	5,50
POM	PP	11500	+5 ÷ +70	FDA - EU	5,50

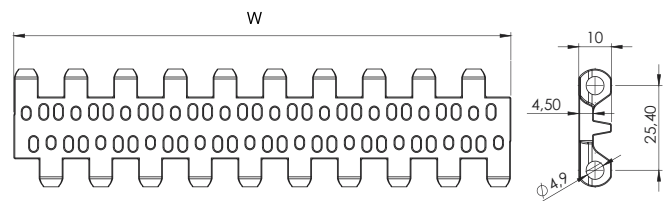
PP = Polypropylene - PE = Polyethylene - POM = Acetal Resin - PA = Polyamide



Belt width [W]

Minimum [mm]	Standard increment [mm]	Special increment [mm]	Width tolerance* [mm]
152,4	Multiple: 76,2	Multiple: 15,24	+/-2 up to 300
			+/-3 up to 600
			+/-4 more than 600

*It is advisable to consider dimensional variations in width based on operating temperatures and humidity when the belt is made of polyamide.



Part number

NMEC 254 P16 -PO -W

Type _____

Pitch _____

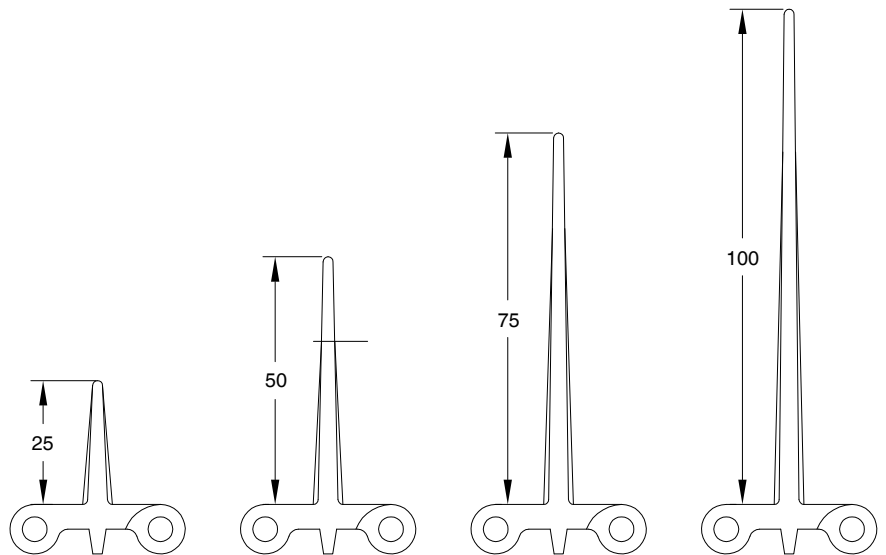
Flat open surface at 16% _____

Belt color: W = white / B = blue

Belt material:
 PO = POM - Acetic Acid / PP = Polypropylene
 PE = Polyethylene / PA = Polyamide

NMEC254 type accessories

Flights



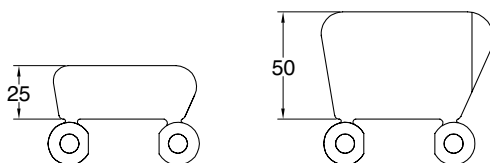
In case of need of flights the following table shows the standard indent. it is possible to have a special indent according to specific customer request.



Standard indent [mm]	Z	15,2	30,4	45,6	60,8

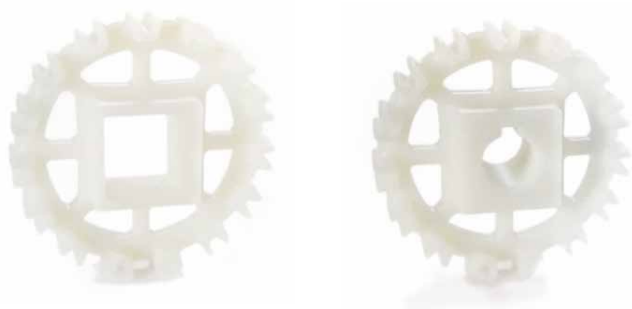
In the case of wide belts, one or more gaps is recommended between flights to allow the belt to be supported on the return path. The maximum width not supported by guides depends on several factors such as the load on the belt, possible incline of the conveyor, and belt or pin material.

Side wall



Inner and outer side wall indent [mm]	Y_i	16	23	30	38	46	53
	Y_e	23	30	37	45	53	60

SPROCKES for the series NMEC254



Teeth nr.	Dp [mm]	Do [mm]	A [mm]	B [mm]	Available standard holes	
					Square [mm]	Ø round + set-screw UNI
8	68,4	64,6	40	10,0	25x25	20 - 25 - 30
10	82,2	83,0	40	10,0	40x40	25 - 30
12	98,1	98,0	40	10,0	40x40	25 - 30
15	122,2	123,0	40	10,0	40x40	25 - 30
18	146,3	147,5	40	10,0	40x40	25 - 30

Standard material: nylon PA6 fiberglass.
 It is possible to supply sprocket with any number of teeth or any material by CNC machining
 Dp = Pitch diameter
 Do = External tooth diameter

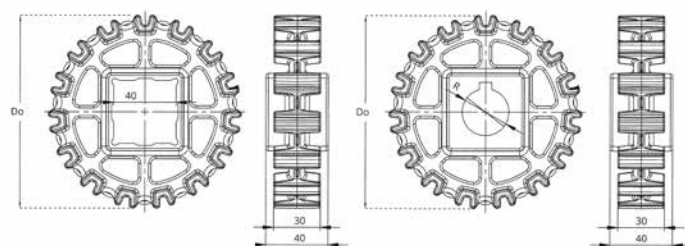
Part number NSEC254 -Q 40 -Z12

Type _____

Hole type: R = round / Q = square _____

Hole size (mm) _____

Number of teeth _____

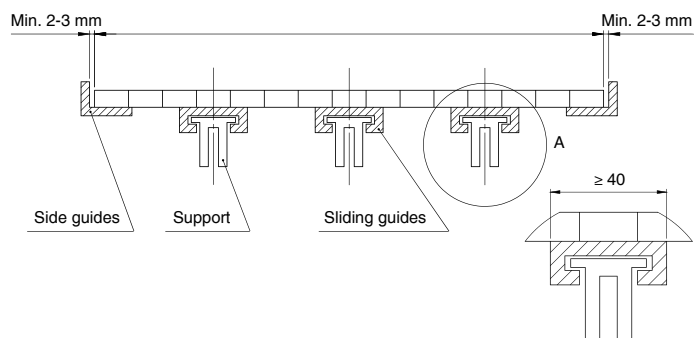


Belt width [mm]			152,4	228,6	304,8	381,0	457,2	533,4	609,6	685,8	762,0	838,2	914,4	990,6	1066,8
Number of sprockes	Drive shaft	Belt tension ≤ 50% of the capacity	2	2	3	4	5	5	6	6	7	7	8	8	9
		Belt tension = 100% of the capacity	2	3	4	5	6	7	8	9	10	11	13	14	15
Driven shaft			2	2	2	2	3	3	3	4	4	4	4	5	5
Sliding guides			2	3	3	4	4	5	5	6	6	7	7	8	8

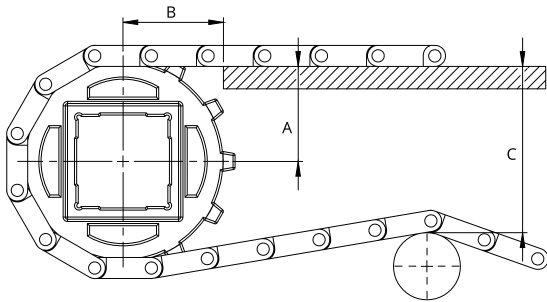
Belt width [mm]			1143,0	1219,2	1295,4	1371,6	1447,8	1524,0	1600,2	1676,4	1752,6	1828,8	190,05	1981,2	2057,4
Number of sprockes	Drive shaft	Belt tension ≤ 50% of the capacity	9	10	10	11	11	12	12	12	13	14	14	15	15
		Belt tension = 100% of the capacity	16	17	18	19	20	21	22	23	25	26	27	28	29
Driven shaft			5	6	6	7	7	7	8	8	8	9	9	10	10
Sliding guides			9	9	10	10	11	11	12	12	13	13	14	14	15

Mounting

When mounting the sprockets, make sure that you have mounted all sprockets oriented in the same phase.
 Only axially lock the central sprocket and leave the other sprockets free to move axially



SPROCKES for the series NMEC254

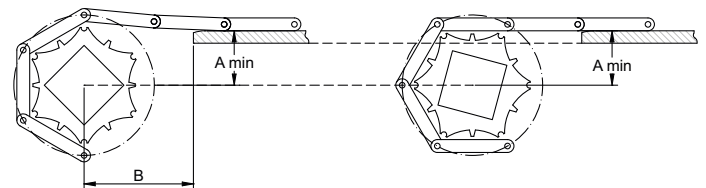
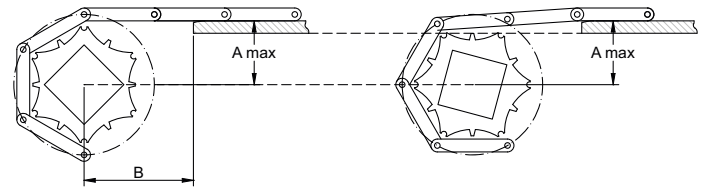


Model	Z [mm]	A _{max} [mm]	A _{min} [mm]	B1 [mm]	B2 [mm]	C _{max} [mm]
NMEC254	8	28,2	25,7	39	28	58
	10	36,5	34,0	41	28	75
	12	44,2	42,2	45	28	91
	15	56,2	54,6	51	28	116
	18	68,2	67,0	55	28	140

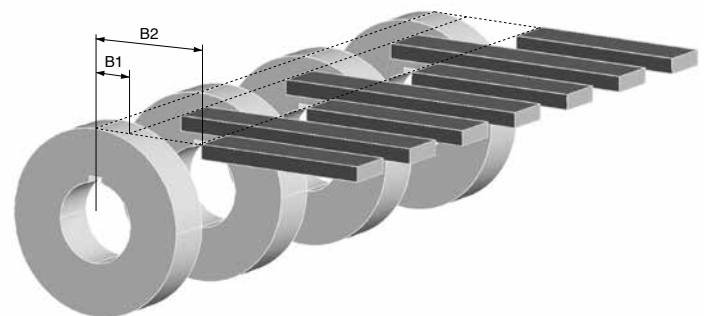
A_{max} = sliding surface position so that the height of the belt engaging the sprocket oscillates between the sliding surface height and a lower one. The height variation depends on the number of teeth and the pitch of the sprocket.

A_{min} = sliding surface position so that the height of the belt engaging the sprocket oscillates between the sliding surface height and a higher one. The height variation depends on the number of teeth and the pitch of the sprocket.

The choice of A dimensions depends on the items you have to carry. it is always suggested to make a chamfer at the end of the sliding guides.



In order to avoid any subsidence of the belt in the area between the guiding strip and the sprockets, it is possible to locate the guides between the sprockets. Two minimum B1 and B2 dimensions are defined.



NMMD254C

PITCH 25,4 mm / 1"

STRAIGHT MODULAR BELTS

- Belt type:** closed flat top surface
- Pin diameter:** Ø 4,9 mm
- Open area:** 0%
- Hole openings:** -
- Minimum width:** 200 mm
- Thickness:** 10 mm
- Accessories:** flights - side wall
- Food Certification:** FDA - EU



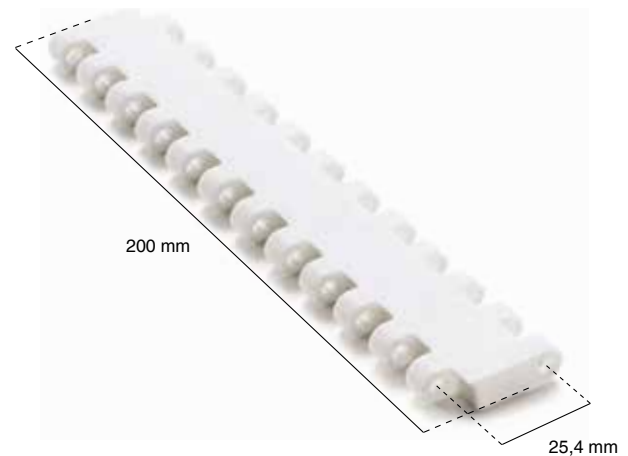
Standard executions

Belt material	Belt color	Pin
PP	White - blue	PP
POM	White - blue	PA

Other materials and colors are available upon request.

Belt material	Pin material	Belt performance [N/m]	Temperature range [°C]	Certification	Weight [kg/m ²]
PP	PP	14200	+5 ÷ +90	FDA - EU	6,10
PE	PE	7800	-73 ÷ +66	FDA - EU	7,10
POM	POM	19000	-43 ÷ +70	FDA - EU	9,40
POM	PA	20100	-40 ÷ +80	FDA - EU	9,20
POM	PP	16700	+5 ÷ +70	FDA - EU	9,20

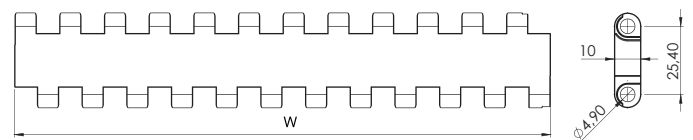
PP = Polypropylene - PE = Polyethylene - POM = Acetal Resin - PA = Polyamide



Belt width [W]

Minimum [mm]	Standard increment [mm]	Special increment [mm]	Width tolerance* [mm]
200	Multiple: 50	Multiple: 16,7	+/-2 up to 300
			+/-3 up to 600
			+/-4 more than 600

*It is advisable to consider dimensional variations in width based on operating temperatures and humidity when the belt is made of polyamide.



Part number

NMMD 254 C -PO -W

Type _____
 Pitch _____
 Closed flat top surface _____

Belt color: W = white / B = blue _____
 Belt material:
 PO = POM - Acetic Acid / PP = Polypropylene
 PE = Polyethylene / PA = Polyamide _____

PITCH 25,4 mm / 1"

- Belt type:** open flat surface flush grid
- Pin diameter:** Ø 4,9 mm
- Open area:** 35%
- Hole openings:** 5,5x7 mm
- Minimum width:** 200 mm
- Thickness:** 10 mm
- Accessories:** flights - side wall
- Food Certification:** FDA - EU



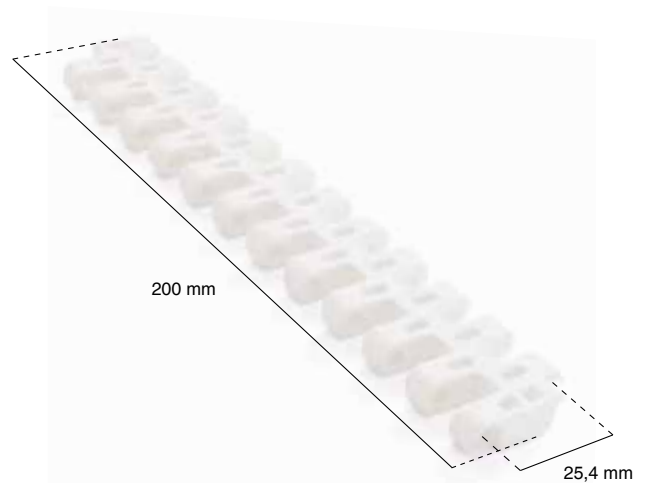
Standard executions

Belt material	Belt color	Pin
PP	White - blue - grey	PP
POM	Blue	PA

Other materials and colors are available upon request.

Belt material	Pin material	Belt performance [N/m]	Temperature range [°C]	Certification	Weight [kg/m²]
PP	PP	14200	+5 ÷ +90	FDA - EU	5,70
PE	PE	7800	-73 ÷ +66	FDA - EU	6,60
POM	POM	19000	-43 ÷ +70	FDA - EU	8,80
POM	PA	20100	-40 ÷ +80	FDA - EU	8,60
POM	PP	16700	+5 ÷ +70	FDA - EU	8,60

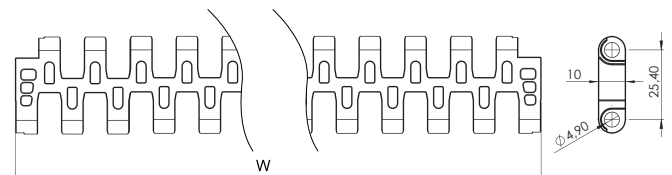
PP = Polypropylene - PE = Polyethylene - POM = Acetal Resin - PA = Polyamide



Belt width [W]

Minimum [mm]	Standard increment [mm]	Special increment [mm]	Width tolerance* [mm]
200	Multiple: 50	Multiple: 16,7	+/-2 up to 300
			+/-3 up to 600
			+/-4 more than 600

*It is advisable to consider dimensional variations in width based on operating temperatures and humidity when the belt is made of polyamide.



Part number

NMMD 254 FG -PO -W

Type _____

Pitch _____

Open flat surface flush grid _____

Belt color: W = white / B = blue / G = grey

Belt material:
 PO = POM - Acetic Acid / PP = Polypropylene
 PE = Polyethylene / PA = Polyamide

NMMD254G48

PITCH 25,4 mm / 1"

STRAIGHT MODULAR BELTS

- Belt type:** flat open surface
- Pin diameter:** Ø 4,9 mm
- Open area:** 48%
- Hole openings:** 9x13,5 e 6x16,5
- Minimum width:** 203,4 mm
- Thickness:** 11 mm
- Accessories:** -
- Food Certification:** FDA - EU



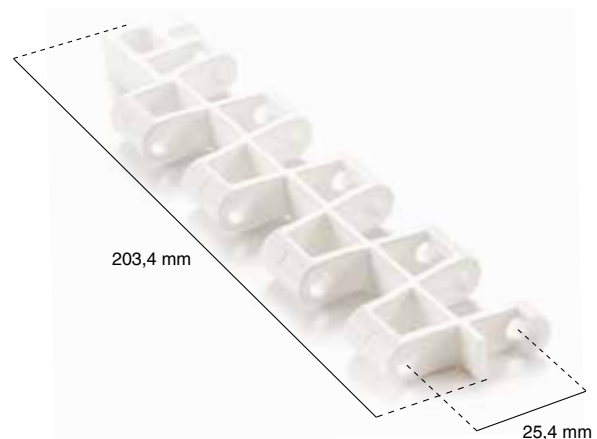
Standard executions

Belt material	Belt color	Pin
POM	White - blue	PA

Other materials and colors are available upon request.

Belt material	Pin material	Belt performance [N/m]	Temperature range [°C]	Certification	Weight [kg/m ²]
PP	PP	8400	+5 ÷ +90	FDA - EU	5,00
POM	POM	14000	-43 ÷ +70	FDA - EU	6,80
POM	PA	15100	-40 ÷ +80	FDA - EU	6,60
POM	PP	12400	+5 ÷ +70	FDA - EU	6,60

PP = Polypropylene - PE = Polyethylene - POM = Acetal Resin - PA = Polyamide



Belt width [W]

Minimum [mm]	Standard increment [mm]	Special increment [mm]	Width tolerance* [mm]
203,4	Multiple: 33,8	-	+/-2 up to 300
			+/-3 up to 600
			+/-4 more than 600

*It is advisable to consider dimensional variations in width based on operating temperatures and humidity when the belt is made of polyamide.



Part number

NMMD 254 G48 -PO -W

Type _____

Pitch _____

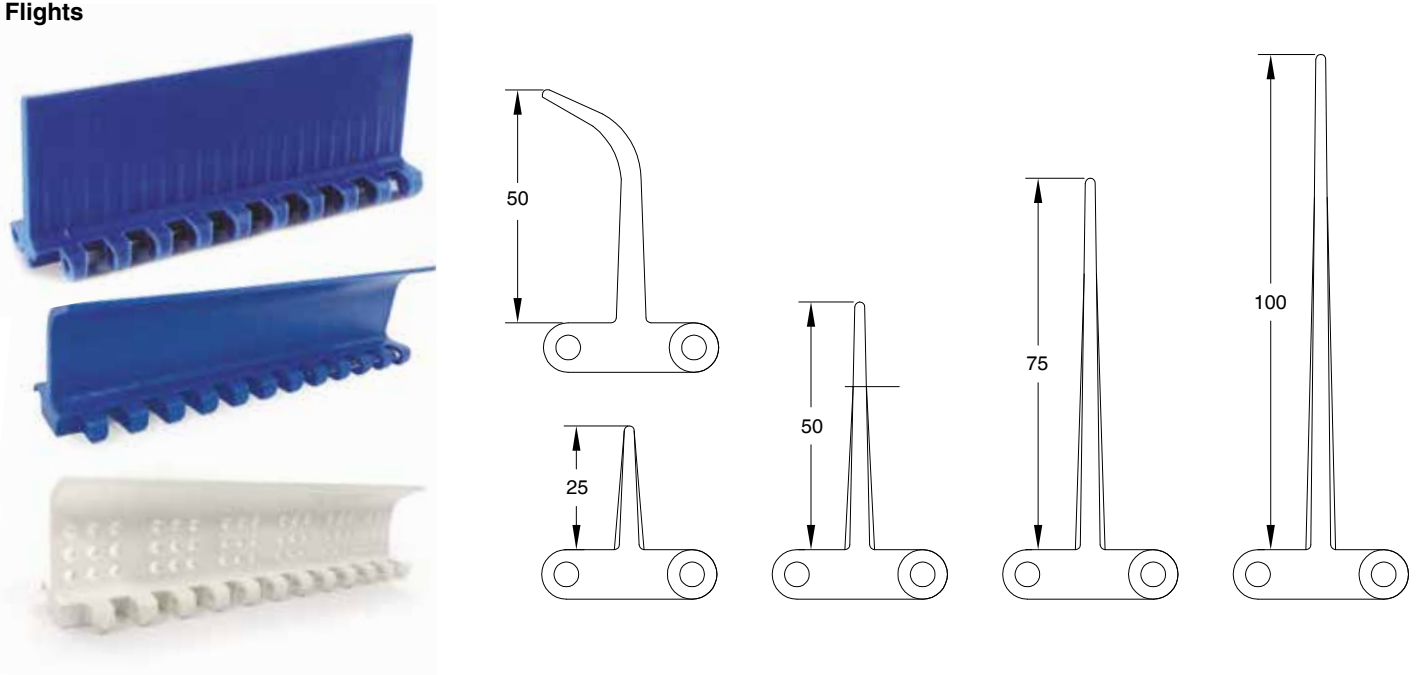
Flat open surface at 48%

Belt color: W = white / B = blue

Belt material:
 PO = POM - Acetic Acid / PP = Polypropylene
 PE = Polyethylene / PA = Polyamide

NMMD254C and NMMD254FG type accessories

Flights



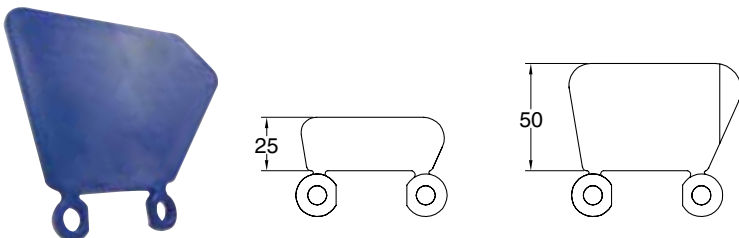
In case of need of flights the following table shows the standard indent. It is possible to have a special indent according to specific customer request.



Standard indent [mm]	Z	33	50	75
----------------------	---	----	----	----

In the case of wide belts, one or more gaps is recommended between flights to allow the belt to be supported on the return path. The maximum width not supported by guides depends on several factors such as the load on the belt, possible incline of the conveyor, and belt or pin material.

Side wall



Inner and outer side wall indent [mm]	Y _i	25	33	41	50	58	66
	Y _e	34	42	50	59	67	75

SPROCKES for the series NMMD254C e NMMD254FG

STRAIGHT MODULAR BELTS



Teeth nr.	Dp [mm]	Do [mm]	A [mm]	B [mm]	Available standard holes	
					Square [mm]	Ø round + set-screw UNI
8	68,4	67,7	30,0	6	25x25	25 - 30
10	82,8	85,0	30,0	6	40x40	25 - 30
12	98,9	102,0	30,0	6	40x40	25 - 30
15	123,1	126,0	30,0	6	40x40	25 - 30
18	147,4	152,0	30,0	6	40x40	25 - 30

Standard material: nylon PA6 fiberglass.
 It is possible to supply sprocket with any number of teeth or any material by CNC machining
 Dp = Pitch diameter
 Do = External tooth diameter

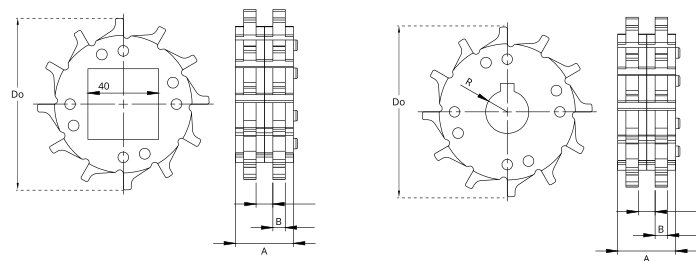
Part number NSEC254TR -Q 40 -Z12

Type _____

Hole type: R = round / Q = square _____

Hole size (mm) _____

Number of teeth _____

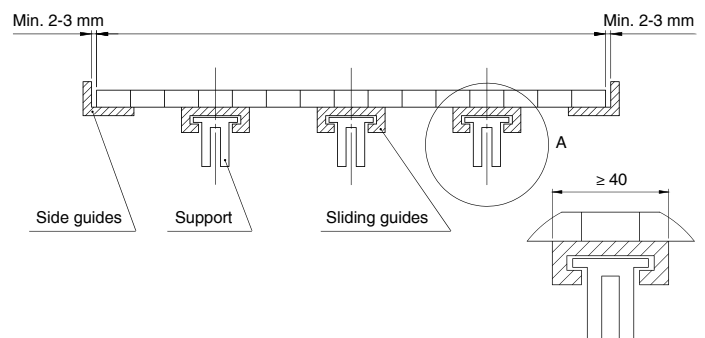


Belt width [mm]		200	300	400	500	600	700	800	900	1000	1100	1200	1400	1600		
Number of sprockes	Drive shaft	Belt tension ≤ 50% of the capacity		2	3	4	5	6	6	7	8	8	9	10	11	13
		Belt tension = 100% of the capacity		2	4	5	6	8	9	11	13	14	16	17	19	22
Driven shaft		2	2	3	3	3	4	4	4	5	5	6	6	7		
Sliding guides		2	3	4	4	5	6	7	7	8	9	9	10	12		

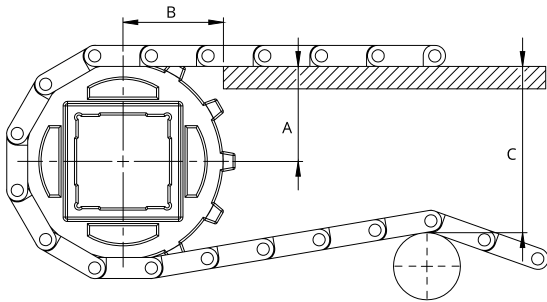
Belt width [mm]		1800	2000	2200	2400	2600		
Number of sprockes	Drive shaft	Belt tension ≤ 50% of the capacity		14	15	16	18	20
		Belt tension = 100% of the capacity		25	28	30	32	34
Driven shaft		8	9	10	11	12		
Sliding guides		13	14	15	17	19		

Mounting

When mounting the sprockets, make sure that you have mounted all sprockets oriented in the same phase.
 Only axially lock the central sprocket and leave the other sprockets free to move axially



SPROCKES for the series NMMD254C e NMMD254FG

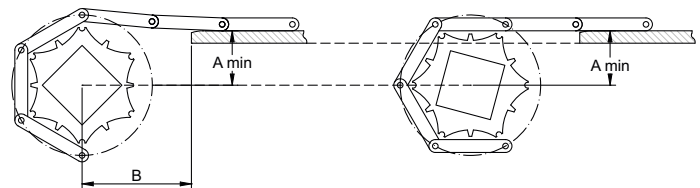
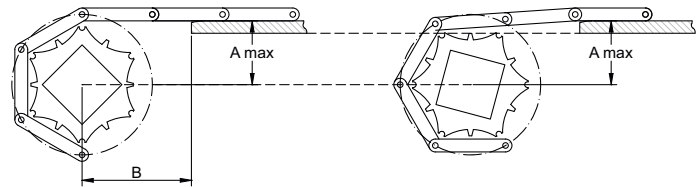


Model	Z [mm]	A _{max} [mm]	A _{min} [mm]	B1 [mm]	B2 [mm]	C _{max} [mm]
MD254C MD254FG	8	28,7	26,1	38	28	54
	10	37,7	36,3	40	28	75
	12	45,2	43,6	44	28	91
	15	56,5	54,5	50	28	116
	18	67,8	65,4	57	28	140

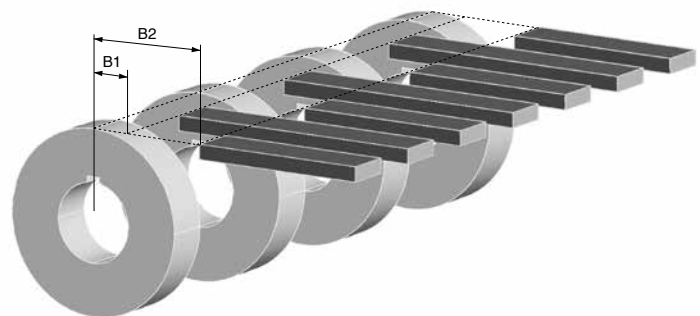
A_{max} = sliding surface position so that the height of the belt engaging the sprocket oscillates between the sliding surface height and a lower one. The height variation depends on the number of teeth and the pitch of the sprocket.

A_{min} = sliding surface position so that the height of the belt engaging the sprocket oscillates between the sliding surface height and a higher one. The height variation depends on the number of teeth and the pitch of the sprocket.

The choice of A dimensions depends on the items you have to carry. it is always suggested to make a chamfer at the end of the sliding guides.



In order to avoid any subsidence of the belt in the area between the guiding strip and the sprockets, it is possible to locate the guides between the sprockets. Two minimum B1 and B2 dimensions are defined.



NMHP254C

PITCH 25,4 mm / 1"

STRAIGHT MODULAR BELTS

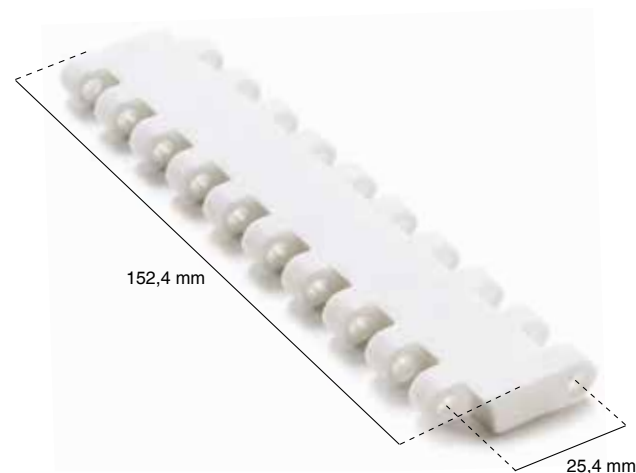
- Belt type:** closed flat top surface
- Pin diameter:** Ø 4,9 mm
- Open area:** 0%
- Hole openings:** -
- Minimum width:** 152,4 mm
- Thickness:** 10 mm
- Accessories:** flights - side wall
- Food Certification:** FDA - EU



Standard executions

Belt material	Belt color	Pin
PP	White - blue - grey	PP
PE	White - blue	POM
POM	White - blue	PA

Other materials and colors are available upon request.



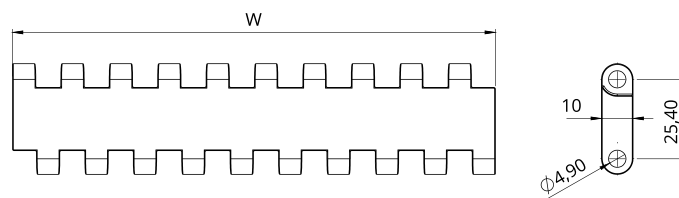
Belt material	Pin material	Belt performance [N/m]	Temperature range [°C]	Certification	Weight [kg/m²]
PP	PP	14620	+5 ÷ +90	FDA - EU	6,90
PE	PE	13000	-73 ÷ +66	FDA - EU	7,10
POM	POM	26250	-43 ÷ +70	FDA - EU	9,90
POM	PA	28350	-40 ÷ +80	FDA - EU	9,70
POM	PP	23100	+5 ÷ +70	FDA - EU	9,70

PP = Polypropylene - PE = Polyethylene - POM = Acetal Resin - PA = Polyamide

Belt width [W]

Minimum [mm]	Standard increment [mm]	Special increment [mm]	Width tolerance* [mm]
152,4	Multiple: 76,2	Multiple: 15,24	+/-2 up to 300
			+/-3 up to 600
			+/-4 more than 600

*It is advisable to consider dimensional variations in width based on operating temperatures and humidity when the belt is made of polyamide.



Part number

NMHP 254 C -PO -W

Type _____

Pitch _____

Closed flat top surface _____

Belt color: W = white / B = blue / G = grey _____

Belt material:
 PO = POM - Acetic Acid / PP = Polypropylene
 PE = Polyethylene / PA = Polyamide _____

Belt type: open flat perforated surface

Pin diameter: Ø 4,9 mm

Open area: 16%

Hole openings: 2,2x7,6 mm

Minimum width: 152,4 mm

Thickness: 10 mm

Accessories: flights - side wall

Food Certification: FDA - EU



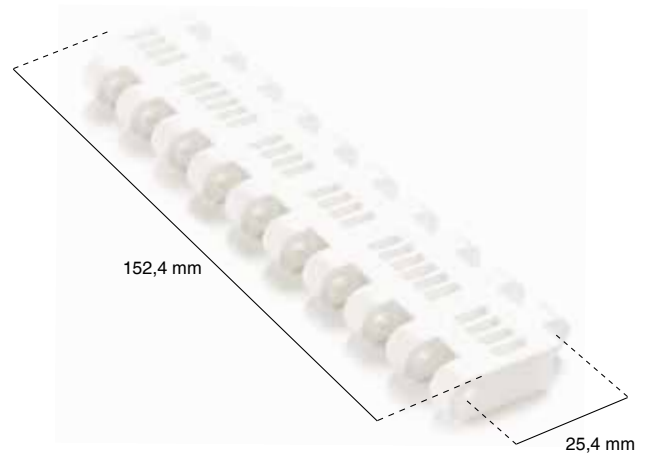
Standard executions

Belt material	Belt color	Pin
PP	White - blue	PP
POM	White - blue	PA

Other materials and colors are available upon request.

Belt material	Pin material	Belt performance [N/m]	Temperature range [°C]	Certification	Weight [kg/m²]
PP	PP	13650	+5 ÷ +90	FDA - EU	6,60
PE	PE	11880	-73 ÷ +66	FDA - EU	6,90
POM	POM	25120	-43 ÷ +70	FDA - EU	9,20
POM	PA	27100	-40 ÷ +80	FDA - EU	9,00
POM	PP	22100	+5 ÷ +70	FDA - EU	9,00

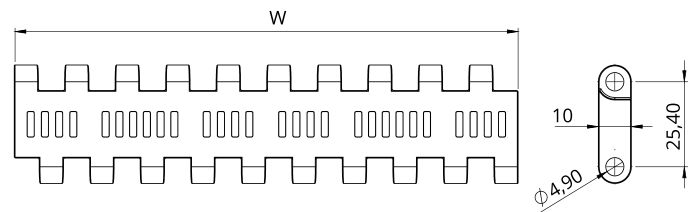
PP = Polypropylene - PE = Polyethylene - POM = Acetal Resin - PA = Polyamide



Belt width [W]

Minimum [mm]	Standard increment [mm]	Special increment [mm]	Width tolerance* [mm]
152,4	Multiple: 76,2	Multiple: 15,24	+/-2 up to 300
			+/-3 up to 600
			+/-4 more than 600

*It is advisable to consider dimensional variations in width based on operating temperatures and humidity when the belt is made of polyamide.



Part number

NMHP 254 P22 -PO -W

Type

Pitch

Open flat perforated surface at 22%

Belt color: W = white / B = blue

Belt material:
PO = POM - Acetic Acid / PP = Polypropylene
PE = Polyethylene / PA = Polyamide

NMHP254GT

PITCH 25,4 mm

STRAIGHT MODULAR BELTS

Belt type: closed surface with rubber top insert

Pin diameter: Ø 4,9 mm

Open area: 0%

Inserto: gomma 40 Sh

Minimum width: 152,4 mm

Thickness: 13 mm

Accessories: flights - side wall

Food Certification: -



Standard executions

Belt material	Belt color	Insert colour	Pin
PP	White	White	PP
PE	Grey	Black	POM

Other materials and colors are available upon request.

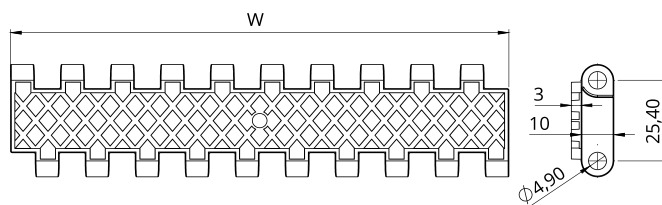
Belt material	Pin material	Belt performance [N/m]	Temperature range [°C]	Certification	Weight [kg/m ²]
PP	PP	14620	+5 ÷ +90	-	7,10
PE	PE	13000	-73 ÷ +66	-	7,40

PP = Polypropylene - PE = Polyethylene - POM = Acetal Resin - PA = Polyamide

Belt width [W]

Minimum [mm]	Standard increment [mm]	Special increment [mm]	Width tolerance* [mm]
152,4	Multiple: 76,2	Multiple: 15,24	+/-2 up to 300
			+/-3 up to 600
			+/-4 more than 600

*It is advisable to consider dimensional variations in width based on operating temperatures and humidity when the belt is made of polyamide.



Part number

NMHP 254 GT -PO -W

Type

Pitch

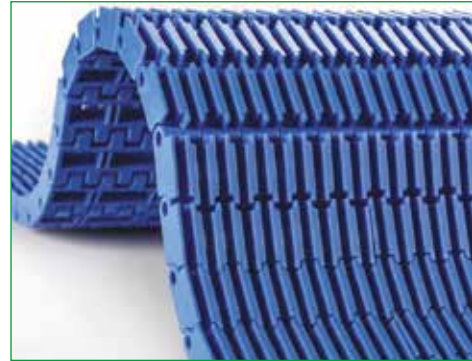
Closed surface with rubber top insert

Belt color: W = white / G = grey

Belt material:
PP = Polypropylene
PE = Polyethylene / PA = Polyamide

PITCH 25,4 mm / 1"

Belt type: open flat surface rised rib
Pin diameter: Ø 4,9 mm
Open area: 16%
Area di contatto con il prodotto: 40%
Minimum width: 152,4 mm
Thickness: 15,7 mm
Accessories: loading and unloading comb
Food Certification: FDA - EU



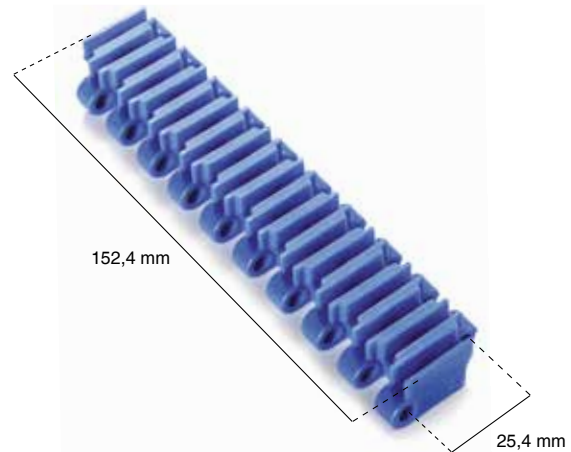
Standard executions

Belt material	Belt color	Pin
PP	White - blue	PP
POM	White - blue	PA

Other materials and colors are available upon request.

Belt material	Pin material	Belt performance [N/m]	Temperature range [°C]	Certification	Weight [kg/m²]
PP	PP	14620	+5 ÷ +90	FDA - EU	7,30
PE	PE	13000	-73 ÷ +66	FDA - EU	7,60
POM	POM	25300	-43 ÷ +70	FDA - EU	10,30
POM	PA	27300	-40 ÷ +80	FDA - EU	10,10
POM	PP	22250	+5 ÷ +70	FDA - EU	10,10

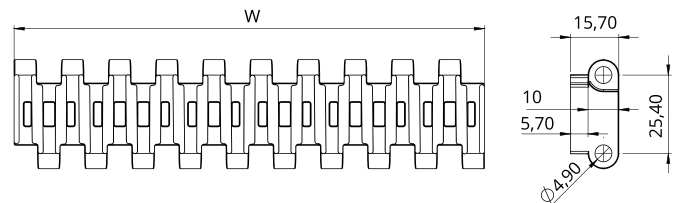
PP = Polypropylene - PE = Polyethylene - POM = Acetal Resin - PA = Polyamide



Belt width [W]

Minimum [mm]	Standard increment [mm]	Special increment [mm]	Width tolerance* [mm]
152,4	Multiple: 76,2	Multiple: 15,24	+/-2 up to 300
			+/-3 up to 600
			+/-4 more than 600

*It is advisable to consider dimensional variations in width based on operating temperatures and humidity when the belt is made of polyamide.



Part number

NMHP 254 RR -PO -W

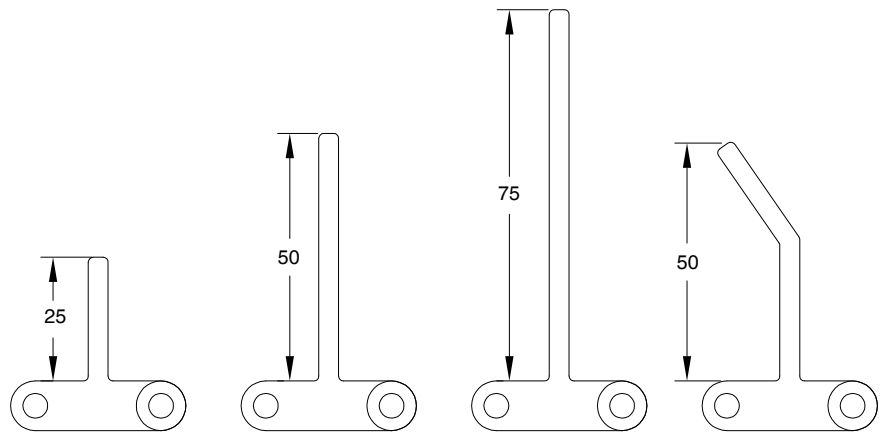
Type
 Pitch
 Open flat surface rised rib

Belt color: W = white / B = blue

Belt material:
 PO = POM - Acetic Acid / PP = Polypropylene
 PE = Polyethylene / PA = Polyamide

NMHP254 type accessories

Flights



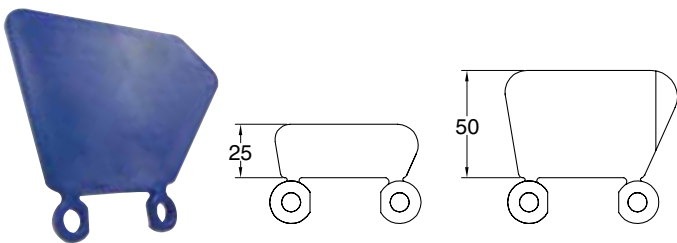
In case of need of flights the following table shows the standard indent. it is possible to have a special indent according to specific customer request.



Standard indent [mm]	Z	15,2	30,4	45,6	60,8
----------------------	---	------	------	------	------

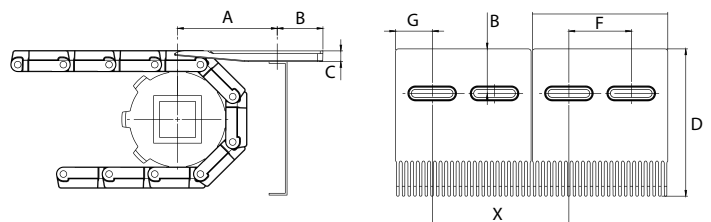
In the case of wide belts, one or more gaps is recommended between flights to allow the belt to be supported on the return path. The maximum width not supported by guides depends on several factors such as the load on the belt, possible incline of the conveyor, and belt or pin material.

Side wall



Inner and outer side wall indent [mm]	Y _i	16	23	30	38	46	53
	Y _e	26	33	40	48	56	63

Comb for belt type NMHP254RR



Quote [mm]	A	B	C	D	E	F	G	X
	105-115	25,0	12,5	146,0	150,0	75,0	37,5	155,0

SPROCKES for the series NMHP254



Teeth nr.	Dp [mm]	Do [mm]	A [mm]	B [mm]	Available standard holes	
					Square [mm]	Ø round + set-screw UNI
8	67,4	64	40	12	25x25	25 - 30
10	83,5	82,5	40	12,0	40x40	25 - 30
12	99,7	99,5	40	12,0	40x40	25 - 30
15	124,1	124,0	40	12,0	40x40	25 - 30
18	148,6	149,5	40	12,0	40x40	25 - 30

Standard material: nylon PA6 fiberglass.
It is possible to supply sprocket with any number of teeth or any material by CNC machining

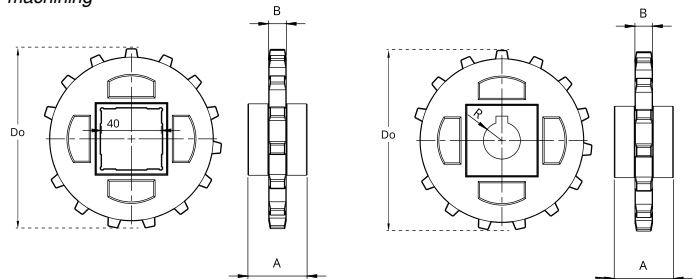
Part number NSHP254 -Q 40 -Z15

Type _____

Hole type: R = round / Q = square _____

Hole size (mm) _____

Number of teeth _____

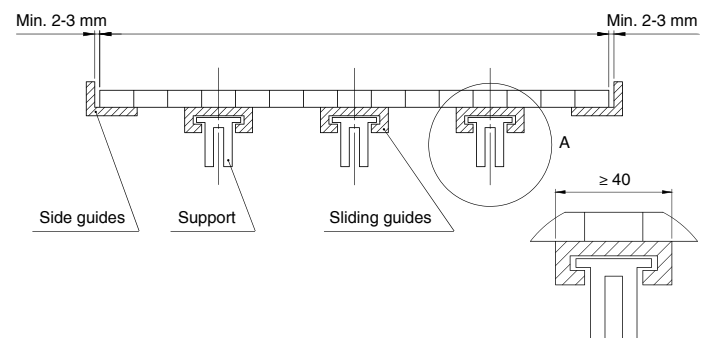


Belt width [mm]		152,4	228,6	304,8	381,0	457,2	533,4	609,6	685,8	762,0	838,2	914,4	990,6	1066,8		
Number of sprockes	Drive shaft	Belt tension ≤ 50% of the capacity		2	2	3	4	5	5	6	6	7	7	8	8	9
		Belt tension = 100% of the capacity		2	3	4	5	6	7	8	9	10	11	13	14	15
Driven shaft		2	2	2	3	3	3	3	4	4	4	4	5	5		
Sliding guides		2	3	3	4	4	5	5	6	6	7	7	8	8		

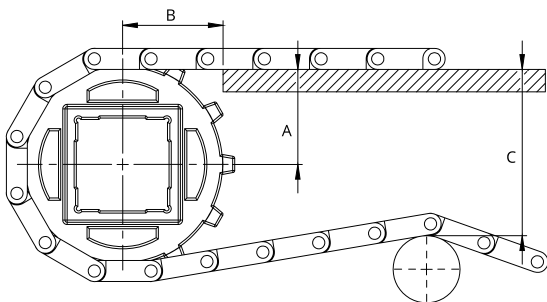
Belt width [mm]		1143	1219,2	1295,4	1371,6	1447,8	1524	1600,2	1676,4	1752,6	1828,8	1905	1981,2	2057,4		
Number of sprockes	Drive shaft	Belt tension ≤ 50% of the capacity		9	10	10	11	11	12	12	12	13	14	14	15	15
		Belt tension = 100% of the capacity		16	17	18	19	20	21	22	23	25	26	27	28	29
Driven shaft		5	6	6	7	7	7	8	8	8	9	9	10	10		
Sliding guides		9	9	10	10	11	11	12	12	13	13	14	14	15		

Mounting

When mounting the sprockets, make sure that you have mounted all sprockets oriented in the same phase. Only axially lock the central sprocket and leave the other sprockets free to move axially



SPROCKES for the series NMHP254

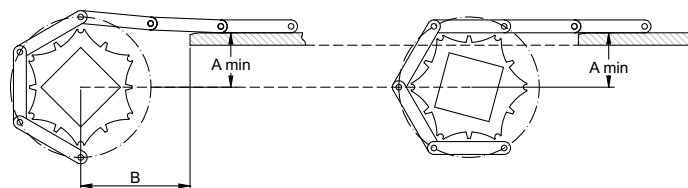
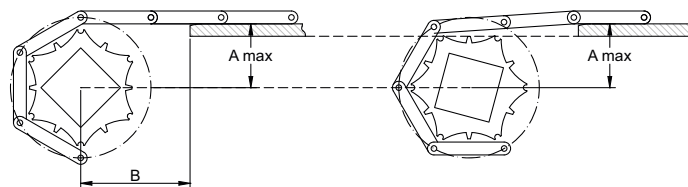


Series	Z [mm]	A _{max} [mm]	A _{min} [mm]	B1 [mm]	B2 [mm]	C _{max} [mm]
NMHP254	8	28	26	39	28	58
	10	36,8	35,0	41	28	77
	12	45,0	43,5	45	28	93
	15	57,0	56,0	51	28	118
	18	69,0	68,3	55	28	143

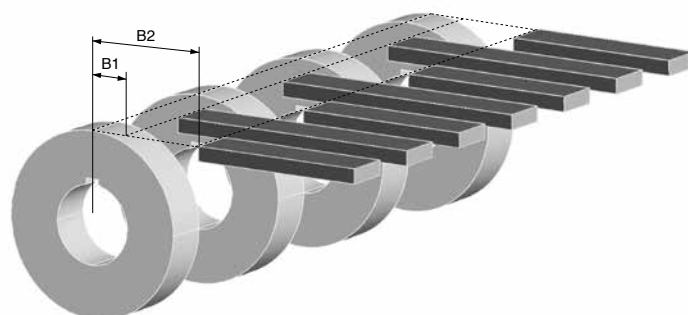
A_{max} = sliding surface position so that the height of the belt engaging the sprocket oscillates between the sliding surface height and a lower one. The height variation depends on the number of teeth and the pitch of the sprocket.

A_{min} = sliding surface position so that the height of the belt engaging the sprocket oscillates between the sliding surface height and a higher one. The height variation depends on the number of teeth and the pitch of the sprocket.

The choice of A dimensions depends on the items you have to carry. it is always suggested to make a chamfer at the end of the sliding guides.



In order to avoid any subsidence of the belt in the area between the guiding strip and the sprockets, it is possible to locate the guides between the sprockets. Two minimum B1 and B2 dimensions are defined.



PITCH 38,1 mm / 1,5"

Belt type: closed flat top surface
Pin diameter: Ø 5,7 mm
Open area: 0%
Hole openings: -
Minimum width: 152,4 mm
Thickness: 12,5 mm
Accessories: flights - side wall
Food Certification: FDA - EU



Standard executions

Belt material	Belt color	Pin
PP	White - blue	PP
PE	White - blue	POM
POM	White - blue	PA

Other materials and colors are available upon request.

Belt material	Pin material	Belt performance [N/m]	Temperature range [°C]	Certification	Weight [kg/m ²]
PP	PP	15900	+5 ÷ +90	FDA - EU	6,35
PE	PE	15200	-73 ÷ +66	FDA - EU	6,60
POM	POM	26950	-43 ÷ +70	FDA - EU	9,60
POM	PA	29100	-40 ÷ +80	FDA - EU	9,30
POM	PP	24200	+5 ÷ +70	FDA - EU	9,30

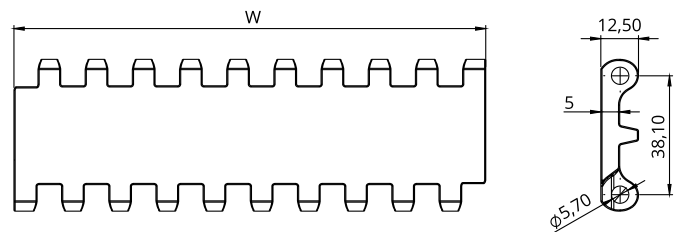
PP = Polypropylene - PE = Polyethylene - POM = Acetal Resin - PA = Polyamide



Belt width [W]

Minimum [mm]	Standard increment [mm]	Special increment [mm]	Width tolerance* [mm]
152,4	Multiple: 76,2	Multiple: 15,24	+/-2 up to 300
			+/-3 up to 600
			+/-4 more than 600

*It is advisable to consider dimensional variations in width based on operating temperatures and humidity when the belt is made of polyamide.



Part number	NMEC 381 C -PO -W	
Type		Belt color: W = white / B = blue
Pitch		Belt material: PO = POM - Acetalic Acid / PP = Polypropylene PE = Polyethylene / PA = Polyamide
Closed flat top surface		

NMEC381P22

PITCH 38,1 mm / 1,5"

STRAIGHT MODULAR BELTS

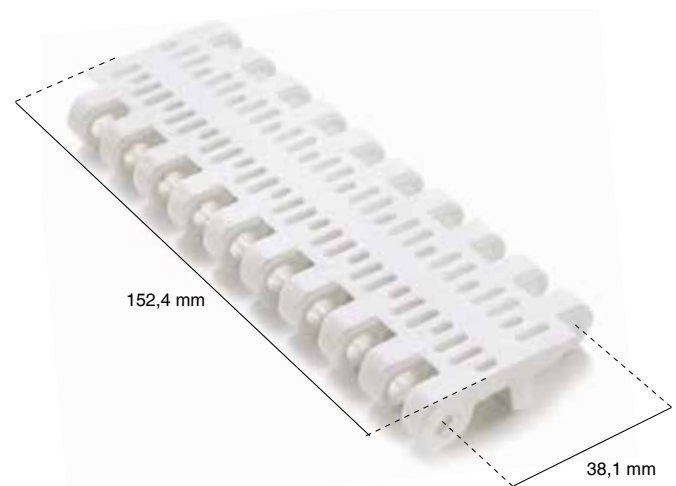
- Belt type:** flat perforated surface
- Pin diameter:** Ø 5,7 mm
- Open area:** 22%
- Hole openings:** 2,5 x 8 mm
- Minimum width:** 152,4 mm
- Thickness:** 12,5 mm
- Accessories:** flights - side wall
- Food Certification:** FDA - EU



Standard executions

Belt material	Belt color	Pin
PP	White - blue	PP
PE	White - blue	POM
POM	White - blue	PA

Other materials and colors are available upon request.



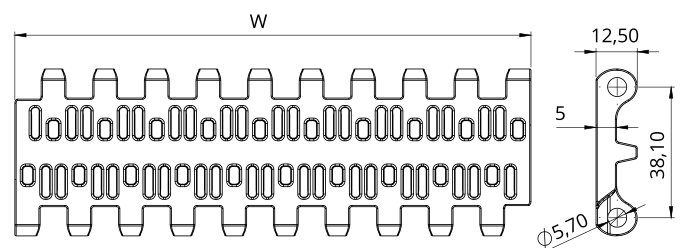
Belt material	Pin material	Belt performance [N/m]	Temperature range [°C]	Certification	Weight [kg/m²]
PP	PP	15270	+5 ÷ +90	FDA - EU	5,70
PE	PE	13970	-73 ÷ +66	FDA - EU	5,90
POM	POM	26900	-43 ÷ +70	FDA - EU	8,60
POM	PA	29000	-40 ÷ +80	FDA - EU	8,30
POM	PP	23650	+5 ÷ +70	FDA - EU	8,30

PP = Polypropylene - PE = Polyethylene - POM = Acetal Resin - PA = Polyamide

Belt width [W]

Minimum [mm]	Standard increment [mm]	Special increment [mm]	Width tolerance* [mm]
152,4	Multiple: 76,2	Multiple: 15,24	+/-2 up to 300
			+/-3 up to 600
			+/-4 more than 600

*It is advisable to consider dimensional variations in width based on operating temperatures and humidity when the belt is made of polyamide.



Part number

NMEC 381 P22 -PO -W

Type _____
 Pitch _____
 Flat perforated surface _____

Belt color: W = white / B = blue

Belt material:
 PO = POM - Acetalic Acid / PP = Polypropylene
 PE = Polyethylene / PA = Polyamide

PITCH 38,1 mm / 1,5"

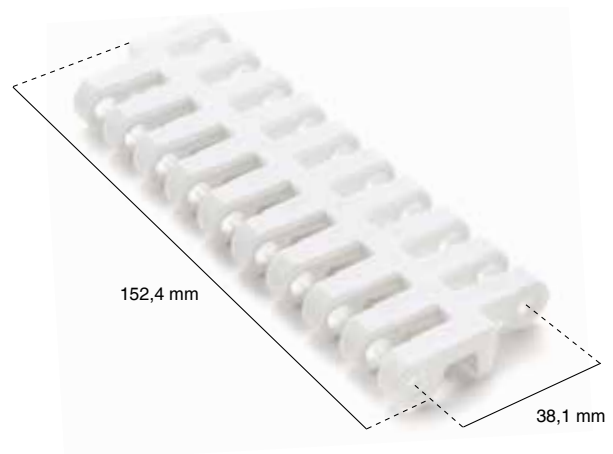
Belt type: open flat surface flush grid
Pin diameter: Ø 5,7 mm
Open area: 30%
Hole openings: 6,5x11 mm
Minimum width: 152,4 mm
Thickness: 12,5 mm
Accessories: flights - side wall
Food Certification: FDA - EU



Standard executions

Belt material	Belt color	Pin
PP	White - blue	PP
PE	White - blue	POM
POM	White - blue	PA

Other materials and colors are available upon request.



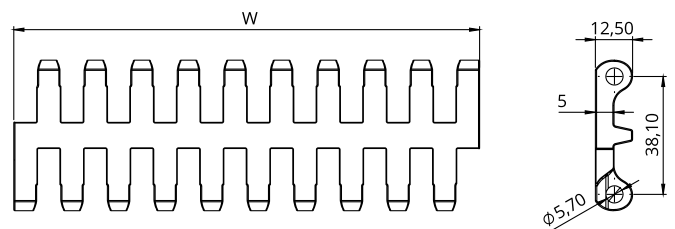
Belt material	Pin material	Belt performance [N/m]	Temperature range [°C]	Certification	Weight [kg/m²]
PP	PP	14900	+5 ÷ +90	FDA - EU	5,30
PE	PE	14300	-73 ÷ +66	FDA - EU	5,40
POM	POM	24800	-43 ÷ +70	FDA - EU	8,00
POM	PA	26850	-40 ÷ +80	FDA - EU	7,70
POM	PP	21850	+5 ÷ +70	FDA - EU	7,70

PP = Polypropylene - PE = Polyethylene - POM = Acetal Resin - PA = Polyamide

Belt width [W]

Minimum [mm]	Standard increment [mm]	Special increment [mm]	Width tolerance* [mm]
152,4	Multiple: 76,2	Multiple: 15,24	+/-2 up to 300
			+/-3 up to 600
			+/-4 more than 600

*It is advisable to consider dimensional variations in width based on operating temperatures and humidity when the belt is made of polyamide.



Part number

NMEC 381 FG -PO -W

Type _____
 Pitch _____
 Open flat surface flush grid

Belt color: W = white / B = blue

Belt material:
 PO = POM - Acetic Acid / PP = Polypropylene
 PE = Polyethylene / PA = Polyamide

NMEC381NT

PITCH 38,1 mm / 1,5"

STRAIGHT MODULAR BELTS

- Belt type:** superficie chiusa con rilievi cilindrici
- Pin diameter:** Ø 5,7 mm
- Open area:** 0%
- Hole openings:** -
- Minimum width:** 152,4 mm
- Thickness:** 14,5 mm
- Accessories:** flights - side wall
- Food Certification:** FDA - EU



Standard executions

Belt material	Belt color	Pin
PP	White - blue	PP
PE	White - blue	POM
POM	White - blue	PA

Other materials and colors are available upon request.

Belt material	Pin material	Belt performance [N/m]	Temperature range [°C]	Certification	Weight [kg/m²]
PP	PP	15900	+5 ÷ +90	FDA - EU	6,50
PE	PE	15200	-73 ÷ +66	FDA - EU	6,85
POM	POM	26950	-43 ÷ +70	FDA - EU	9,90
POM	PA	29100	-40 ÷ +80	FDA - EU	9,60
POM	PP	24200	+5 ÷ +70	FDA - EU	9,60

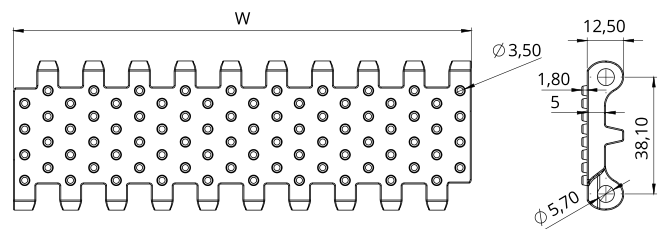
PP = Polypropylene - PE = Polyethylene - POM = Acetal Resin - PA = Polyamide



Belt width [W]

Minimum [mm]	Standard increment [mm]	Special increment [mm]	Width tolerance* [mm]
152,4	Multiple: 76,2	Multiple: 15,24	+/-2 up to 300
			+/-3 up to 600
			+/-4 more than 600

*It is advisable to consider dimensional variations in width based on operating temperatures and humidity when the belt is made of polyamide.



Part number

NMEC 381 NT -PO -W

Type _____

Pitch _____

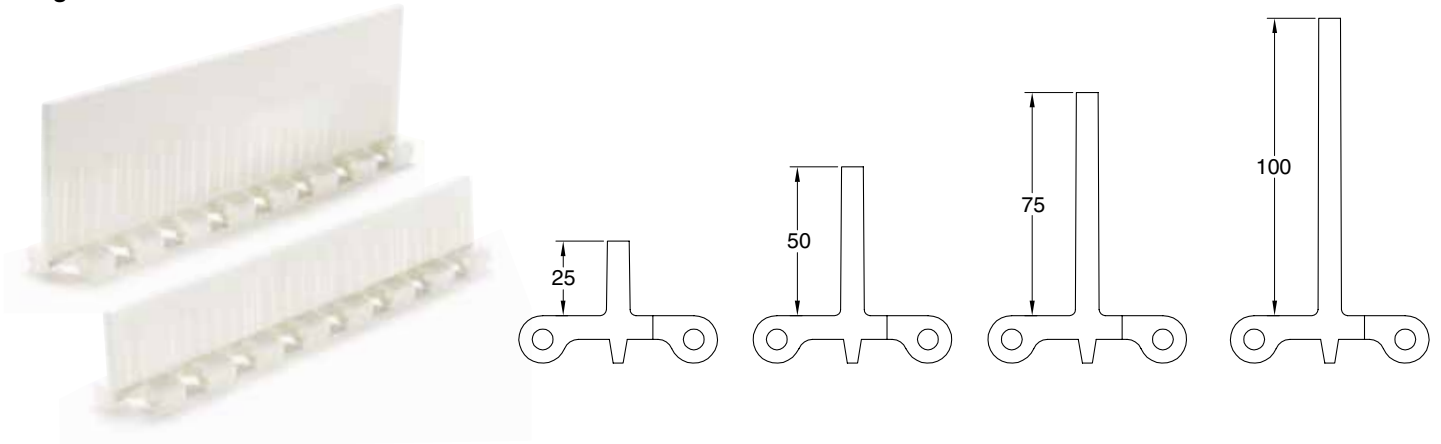
Superficie del nastro chiusa con rilievi cilindrici

Belt color: W = white / B = blue

Belt material:
 PO = POM - Acetic Acid / PP = Polypropylene
 PE = Polyethylene / PA = Polyamide

NMEC381 type accessories

Flights



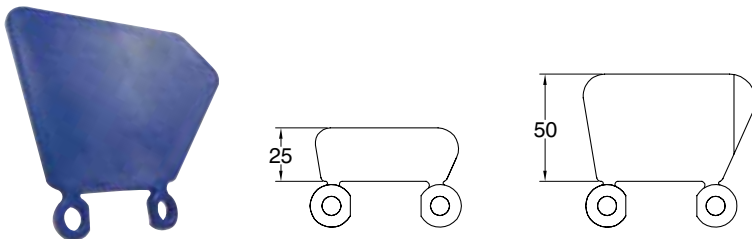
In case of need of flights the following table shows the standard indent. it is possible to have a special indent according to specific customer request.



Standard indent [mm]	Z	15,2	30,4	45,6	60,8
	Z	15,2	30,4	45,6	60,8

In the case of wide belts, one or more gaps is recommended between flights to allow the belt to be supported on the return path. The maximum width not supported by guides depends on several factors such as the load on the belt, possible incline of the conveyor, and belt or pin material.

Side wall



Inner and outer side wall indent [mm]	Y _i	16	23	30	38	46	53
	Y _e	26	33	40	48	56	63



SPROCKES for the series NMEC381



Teeth nr.	Dp [mm]	Do [mm]	A [mm]	B [mm]	Available standard holes	
					Square [mm]	Ø round + set-screw UNI
8	99,6	97,6	40	10,0	40x40	20 - 25 - 30
10	123,3	122,0	40	10,0	40x40	20 - 25 - 30
12	147,2	146,4	40	10,0	40x40	20 - 25 - 30

Standard material: nylon PA6 fiberglass.
It is possible to supply sprocket with any number of teeth or any material by CNC machining

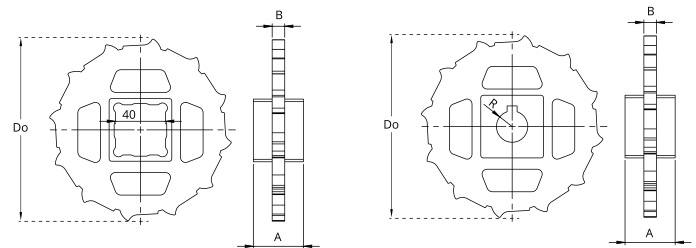
Part number NSEC381 -Q 40 -Z10

Type _____

Hole type: R = round / Q = square _____

Hole size (mm) _____

Number of teeth _____

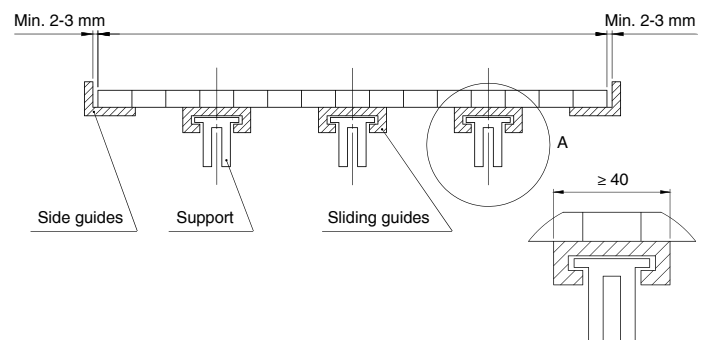


Belt width [mm]		152,4	228,6	304,8	381,0	457,2	533,4	609,6	685,8	762,0	838,2	914,4	990,6	1066,8	
Number of sprockes	Drive shaft	Belt tension ≤ 50% of the capacity	2	2	3	4	5	5	6	6	7	7	8	8	9
		Belt tension = 100% of the capacity	2	2	3	4	5	6	7	8	9	10	11	12	13
Driven shaft			2	2	2	3	3	3	3	4	4	4	4	5	5
Sliding guides			2	3	3	3	4	4	5	5	5	6	6	6	7

Belt width [mm]		1143,0	1219,2	1295,4	1371,6	1447,8	1524,0	1600,2	1676,4	1752,6	1828,8	1905,0	1981,2	2057,4	
Number of sprockes	Drive shaft	Belt tension ≤ 50% of the capacity	9	10	10	11	11	12	12	12	13	14	14	15	15
		Belt tension = 100% of the capacity	14	15	16	17	18	19	20	20	21	22	23	24	25
Driven shaft			5	6	6	7	7	7	8	8	8	9	9	10	10
Sliding guides			7	8	8	8	9	9	10	10	10	11	11	11	12

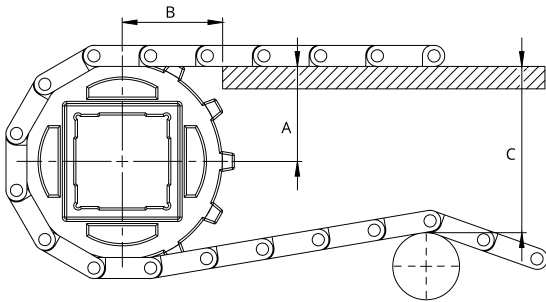
Mounting

When mounting the sprockets, make sure that you have mounted all sprockets oriented in the same phase.
Only axially lock the central sprocket and leave the other sprockets free to move axially



STRAIGHT MODULAR BELTS

SPROCKES for the series NMEC381

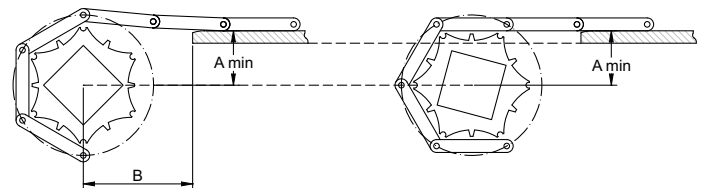
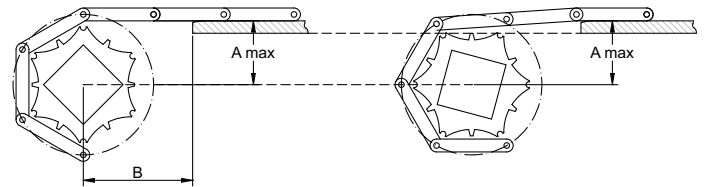


Series	Z [mm]	A _{max} [mm]	A _{min} [mm]	B1 [mm]	B2 [mm]	C _{max} [mm]
NMEC381	8	44,0	41,0	49	42	91
	10	55,5	54,0	55	42	116
	12	67,5	66,5	59	42	140

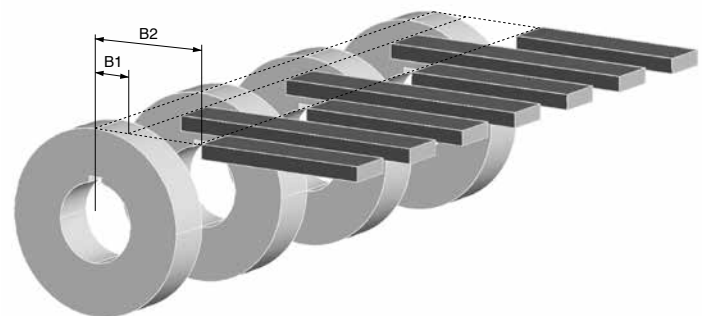
A_{max} = sliding surface position so that the height of the belt engaging the sprocket oscillates between the sliding surface height and a lower one. The height variation depends on the number of teeth and the pitch of the sprocket.

A_{min} = sliding surface position so that the height of the belt engaging the sprocket oscillates between the sliding surface height and a higher one. The height variation depends on the number of teeth and the pitch of the sprocket.

The choice of A dimensions depends on the items you have to carry. it is always suggested to make a chamfer at the end of the sliding guides.



In order to avoid any subsidence of the belt in the area between the guiding strip and the sprockets, it is possible to locate the guides between the sprockets. Two minimum B1 and B2 dimensions are defined.



NMEC508C

PITCH 50,8 mm / 2"

STRAIGHT MODULAR BELTS

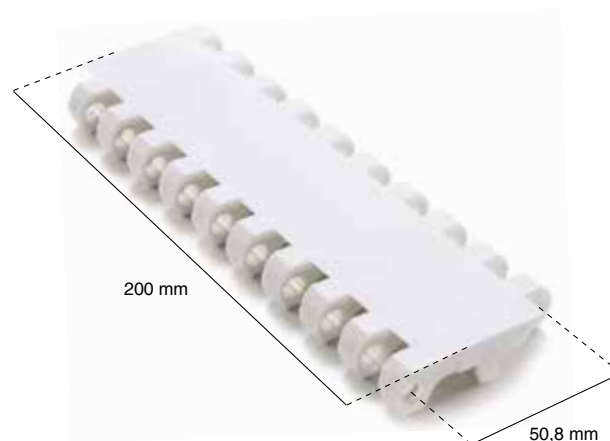
- Belt type:** closed flat top surface
- Pin diameter:** Ø 7 mm
- Open area:** 0%
- Hole openings:** -
- Minimum width:** 200 mm
- Thickness:** 16 mm
- Accessories:** flights - side wall
- Food Certification:** FDA - EU



Standard executions

Belt material	Belt color	Pin
PP	White - blue	PP
PE	White - blue	POM

Other materials and colors are available upon request.



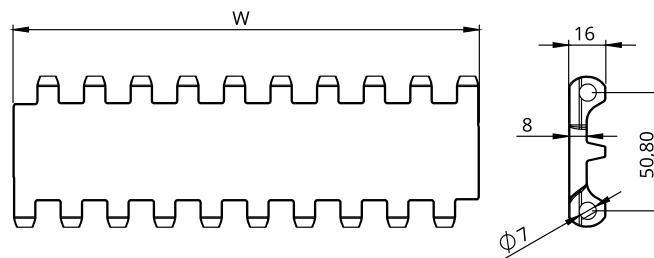
Belt material	Pin material	Belt performance [N/m]	Temperature range [°C]	Certification	Weight [kg/m²]
PP	PP	17500	+5 ÷ +90	FDA - EU	8,00
PE	PE	16750	-73 ÷ +66	FDA - EU	8,20
POM	POM	29500	-43 ÷ +70	FDA - EU	12,10
POM	PA	31500	-40 ÷ +80	FDA - EU	11,70
POM	PP	25650	+5 ÷ +70	FDA - EU	11,70

PP = Polypropylene - PE = Polyethylene - POM = Acetal Resin - PA = Polyamide

Belt width [W]

Minimum [mm]	Standard increment [mm]	Special increment [mm]	Width tolerance* [mm]
200	Multiple: 100	20	+/-2 up to 300
			+/-3 up to 600
			+/-4 more than 600

**It is advisable to consider dimensional variations in width based on operating temperatures and humidity when the belt is made of polyamide.*



Part number

NMEC 508 C -PO -W

Type _____

Pitch _____

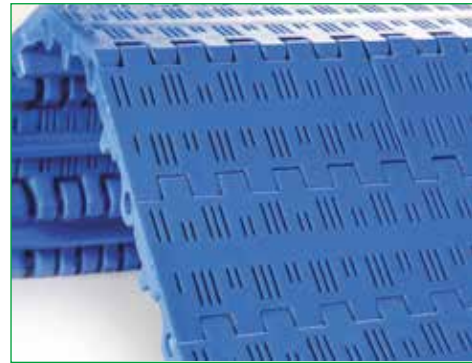
Closed flat top surface _____

Belt color: W = white / B = blue _____

Belt material:
 PO = POM - Acetic Acid / PP = Polypropylene
 PE = Polyethylene / PA = Polyamide _____

PITCH 50,8 mm / 2"

- Belt type:** flat open surface
- Pin diameter:** Ø 7 mm
- Open area:** 11%
- Hole openings:** 1,2x12 mm
- Minimum width:** 200 mm
- Thickness:** 16 mm
- Accessories:** flights - side wall
- Food Certification:** FDA - EU



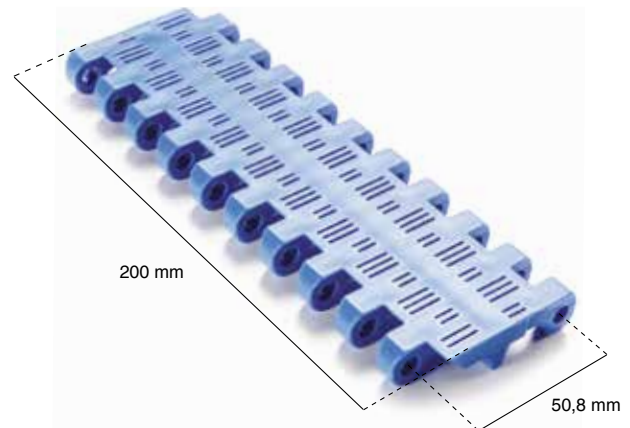
Standard executions

Belt material	Belt color	Pin
PP	White - blue	PP
POM	White - blue	PA

Other materials and colors are available upon request.

Belt material	Pin material	Belt performance [N/m]	Temperature range [°C]	Certification	Weight [kg/m²]
PP	PP	16060	+5 ÷ +90	FDA - EU	6,90
PE	PE	15000	-73 ÷ +66	FDA - EU	7,20
POM	POM	28300	-43 ÷ +70	FDA - EU	10,50
POM	PA	30200	-40 ÷ +80	FDA - EU	10,20
POM	PP	24600	+5 ÷ +70	FDA - EU	10,20

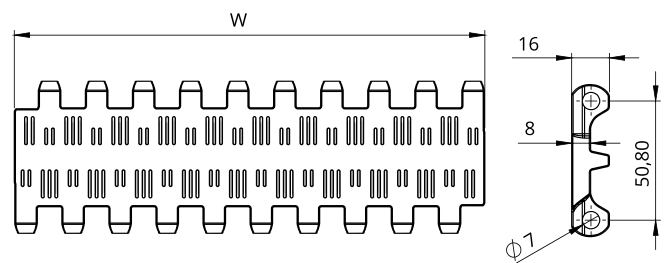
PP = Polypropylene - PE = Polyethylene - POM = Acetal Resin - PA = Polyamide



Belt width [W]

Minimum [mm]	Standard increment [mm]	Special increment [mm]	Width tolerance* [mm]
200	Multiple: 100	20	+/-2 up to 300
			+/-3 up to 600
			+/-4 more than 600

*It is advisable to consider dimensional variations in width based on operating temperatures and humidity when the belt is made of polyamide.



Part number

NMEC 508 P11 -PO -W

Type _____
 Pitch _____
 Flat open surface at 11%

Belt color: W = white / B = blue
 Belt material:
 PO = POM - Acetic Acid / PP = Polypropylene
 PE = Polyethylene / PA = Polyamide

NMEC508P13

PITCH 50,8 mm / 2"

STRAIGHT MODULAR BELTS

- Belt type:** flat perforated surface
- Pin diameter:** Ø 7 mm
- Open area:** 13%
- Hole openings:** Fori Ø 4 mm
- Minimum width:** 200 mm
- Thickness:** 16 mm
- Accessories:** flights - side wall
- Food Certification:** FDA - EU



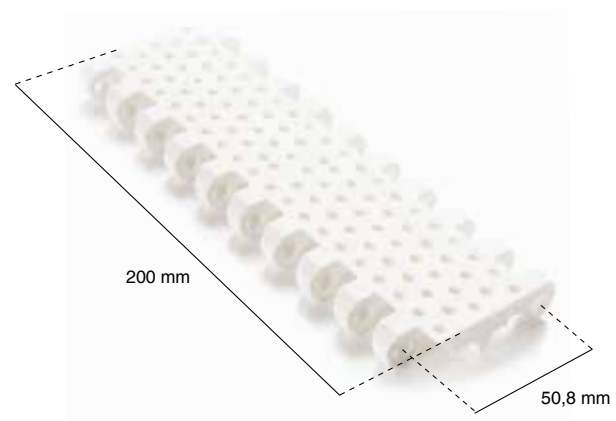
Standard executions

Belt material	Belt color	Pin
PP	White - blue	PP

Other materials and colors are available upon request.

Belt material	Pin material	Belt performance [N/m]	Temperature range [°C]	Certification	Weight [kg/m²]
PP	PP	16060	+5 ÷ +90	FDA - EU	6,90
PE	PE	15000	-73 ÷ +66	FDA - EU	7,20
POM	POM	28400	-43 ÷ +70	FDA - EU	10,50
POM	PA	30200	-40 ÷ +80	FDA - EU	10,20
POM	PP	24600	+5 ÷ +70	FDA - EU	10,20

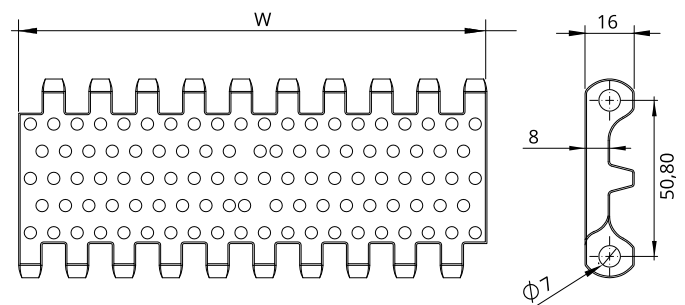
PP = Polypropylene - PE = Polyethylene - POM = Acetal Resin - PA = Polyamide



Belt width [W]

Minimum [mm]	Standard increment [mm]	Special increment [mm]	Width tolerance* [mm]
200	Multiple: 100	20	+/-2 up to 300
			+/-3 up to 600
			+/-4 more than 600

*It is advisable to consider dimensional variations in width based on operating temperatures and humidity when the belt is made of polyamide.



Part number

NMEC 508 P13 -PO -W

Type _____
 Pitch _____
 Flat perforated surface at 13%

Belt color: W = white / B = blue

Belt material:
 PO = POM - Acetic Acid / PP = Polypropylene
 PE = Polyethylene / PA = Polyamide

PITCH 50,8 mm / 2"

Belt type: flat open surface
Pin diameter: Ø 7 mm
Open area: 22%
Max hole openings: 3x12 mm
Minimum width: 200 mm
Thickness: 16 mm
Accessories: flights - side wall
Food Certification: FDA - EU



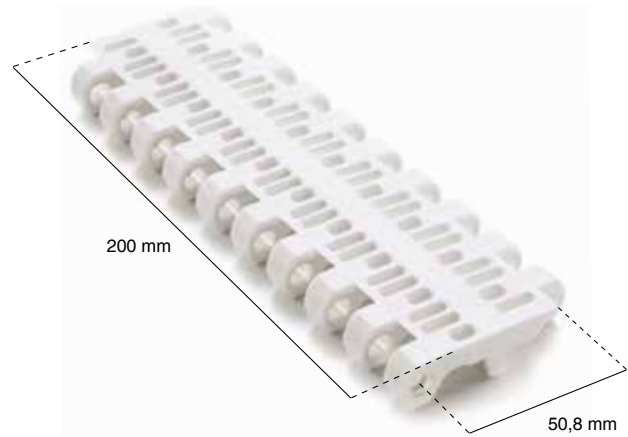
Standard executions

Belt material	Belt color	Pin
PP	White - blue	PP
PE	White - blue	POM
PPH	Blue	PPH

Other materials and colors are available upon request.

Belt material	Pin material	Belt performance [N/m]	Temperature range [°C]	Certification	Weight [kg/m²]
PP	PP	16060	+5 ÷ +90	FDA - EU	6,90
PE	PE	15000	-73 ÷ +66	FDA - EU	7,20
POM	POM	28300	-43 ÷ +70	FDA - EU	10,50
POM	PA	30200	-40 ÷ +80	FDA - EU	10,20
POM	PP	24600	+5 ÷ +70	FDA - EU	10,20
PH	PH	16200	+20 ÷ +105	FDA - EU	6,90

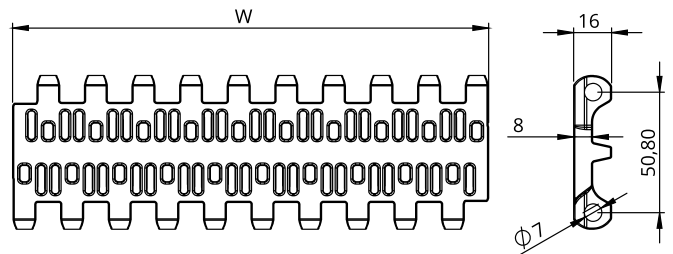
PP = Polypropylene - PE = Polyethylene - POM = Acetal Resin - PA = Polyamide
 PPH = Polypropylene for high temperatures and wet environment



Belt width [W]

Minimum [mm]	Standard increment [mm]	Special increment [mm]	Width tolerance* [mm]
200	Multiple: 100	20	+/-2 up to 300
			+/-3 up to 600
			+/-4 more than 600

*It is advisable to consider dimensional variations in width based on operating temperatures and humidity when the belt is made of polyamide.



Part number

NMEC 508 P22 -PO -W

Type

Pitch

Flat perforated surface at 22%

Belt color: W = white / B = blue

Belt material:

PO = POM - Acetic Acid / PP = Polypropylene

PE = Polyethylene / PA = Polyamide / PH = Polypropylene for high temperatures

NMEC508FG

PITCH 50,8 mm / 2"

STRAIGHT MODULAR BELTS

- Belt type:** open flat surface flush grid
- Pin diameter:** Ø 7 mm
- Open area:** 35%
- Hole openings:** 9x12 mm
- Minimum width:** 200 mm
- Thickness:** 16 mm
- Accessories:** flights - side wall
- Food Certification:** FDA - EU



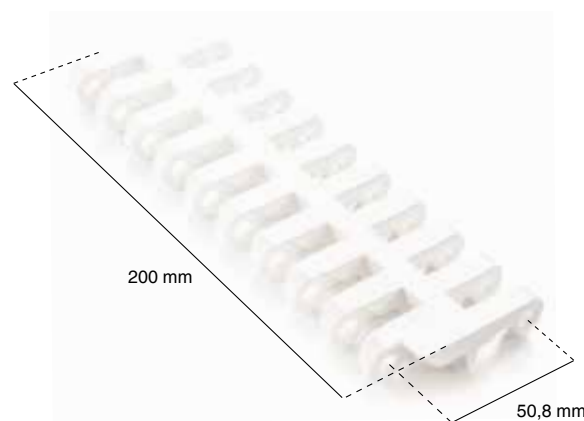
Standard executions

Belt material	Belt color	Pin
PP	White - blue	PP
PE	White - blue	POM
POM	White - blue	PA

Other materials and colors are available upon request.

Belt material	Pin material	Belt performance [N/m]	Temperature range [°C]	Certification	Weight [kg/m ²]
PP	PP	15050	+5 ÷ +90	FDA - EU	6,0
PE	PE	12100	-73 ÷ +66	FDA - EU	7,00
POM	POM	24900	-43 ÷ +70	FDA - EU	10,30
POM	PA	26600	-40 ÷ +80	FDA - EU	10,20
POM	PP	21600	+5 ÷ +70	FDA - EU	10,20

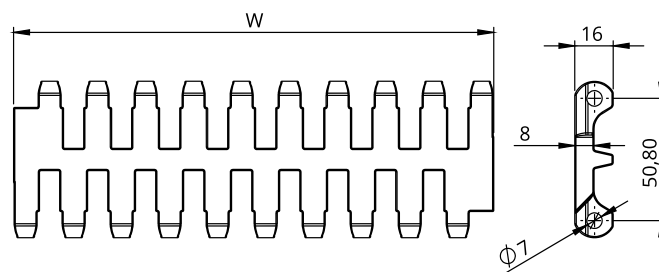
PP = Polypropylene - PE = Polyethylene - POM = Acetal Resin - PA = Polyamide



Belt width [W]

Minimum [mm]	Standard increment [mm]	Special increment [mm]	Width tolerance* [mm]
200	Multiple: 100	20	+/-2 up to 300
			+/-3 up to 600
			+/-4 more than 600

*It is advisable to consider dimensional variations in width based on operating temperatures and humidity when the belt is made of polyamide.



Part number	NMEC 508 FG -PO -W	
Type		Belt color: W = white / B = blue
Pitch		Belt material: PO = POM - Acetic Acid / PP = Polypropylene PE = Polyethylene / PA = Polyamide
Open flat surface flush grid		

PITCH 50,8 mm / 2"

Belt type: superficie chiusa con rilievi a piramide

Pin diameter: Ø 7 mm

Open area: 0%

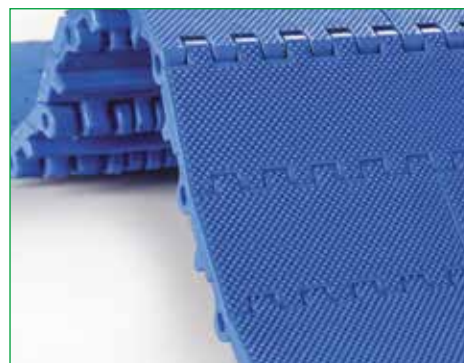
Hole openings: -

Minimum width: 200 mm

Thickness: 17 mm

Accessories: flights - side wall

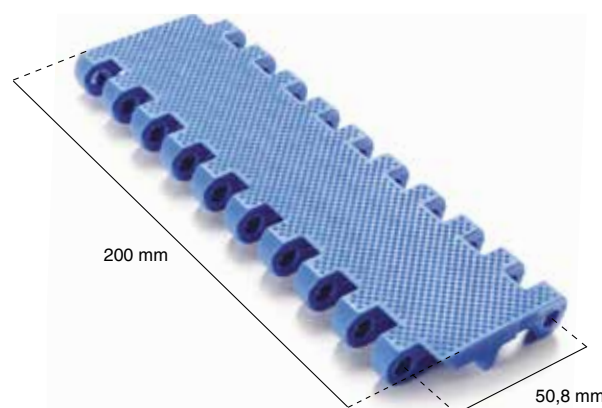
Food Certification: FDA - EU



Standard executions

Belt material	Belt color	Pin
PP	White - blue	PP
PE	White - blue	POM
POM	White - blue	PA

Other materials and colors are available upon request.



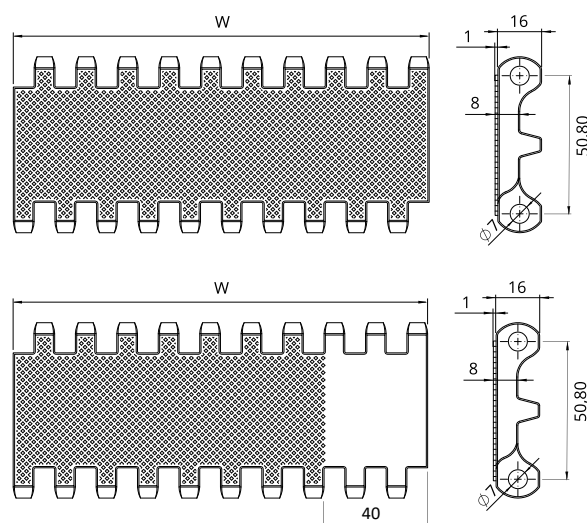
Belt material	Pin material	Belt performance [N/m]	Temperature range [°C]	Certification	Weight [kg/m²]
PP	PP	17500	+5 ÷ +90	FDA - EU	8,00
PE	PE	16750	-73 ÷ +66	FDA - EU	8,20
POM	POM	29500	-43 ÷ +70	FDA - EU	12,20
POM	PA	31500	-40 ÷ +80	FDA - EU	11,90
POM	PP	25650	+5 ÷ +70	FDA - EU	11,90

PP = Polypropylene - PE = Polyethylene - POM = Acetal Resin - PA = Polyamide

Belt width [W]

Minimum [mm]	Standard increment [mm]	Special increment [mm]	Width tolerance* [mm]
200	Multiple: 100	20	+/-2 up to 300
			+/-3 up to 600
			+/-4 more than 600

*It is advisable to consider dimensional variations in width based on operating temperatures and humidity when the belt is made of polyamide.



Part number

NMEC 508 DT -PO -W

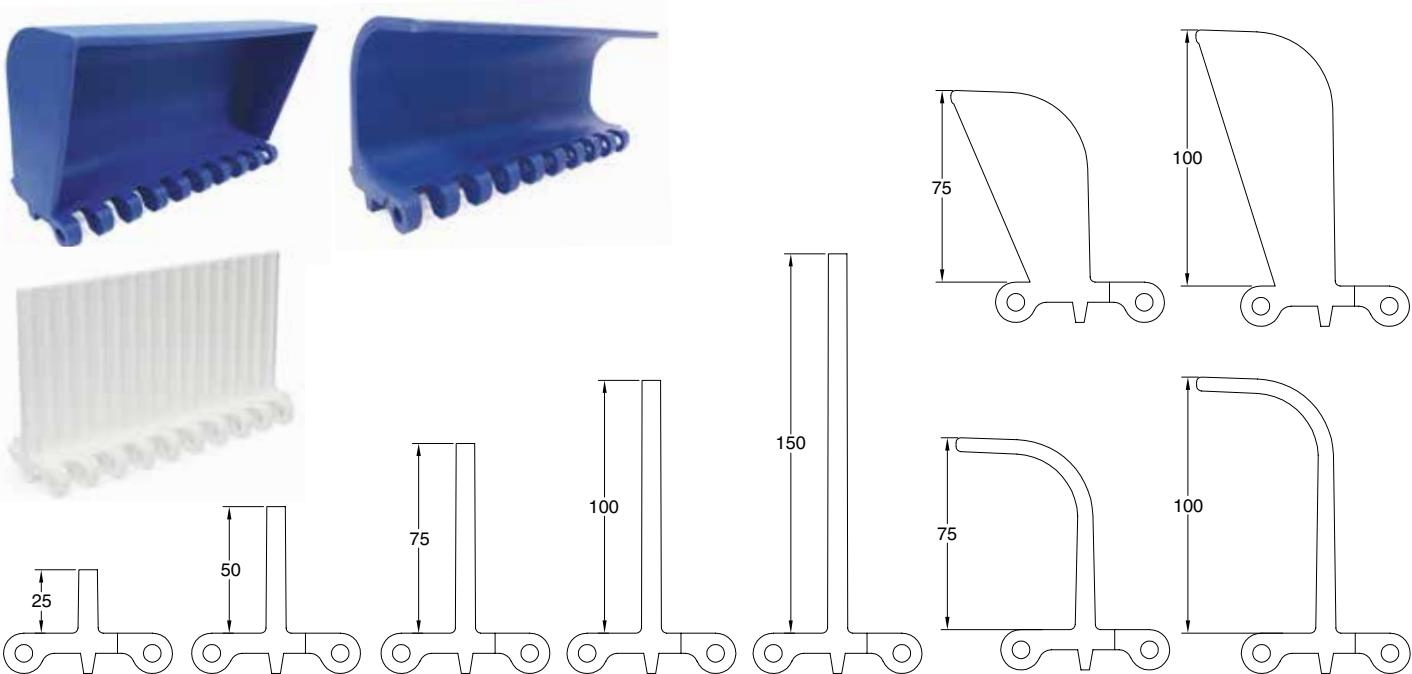
Type _____
 Pitch _____
 Superficie del nastro chiusa con rilievi a pira _____

Belt color: W = white / B = blue

Belt material:
 PO = POM - Acetic Acid / PP = Polypropylene
 PE = Polyethylene / PA = Polyamide

NMEC508 type accessories

Flights



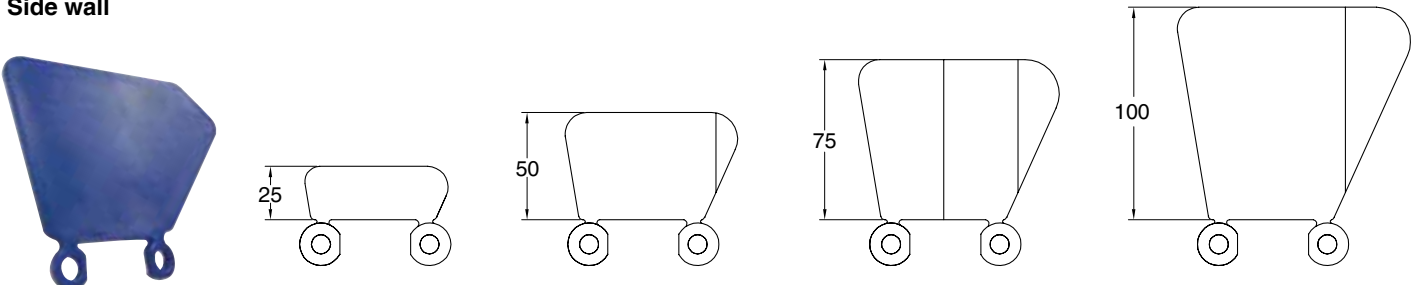
In case of need of flights the following table shows the standard indent. it is possible to have a special indent according to specific customer request.



Standard indent [mm]	Z	40	60	80	100

In the case of wide belts, one or more gaps is recommended between flights to allow the belt to be supported on the return path. The maximum width not supported by guides depends on several factors such as the load on the belt, possible incline of the conveyor, and belt or pin material.

Side wall



Inner and outer side wall indent [mm]	Y _i	20	30	40	50	60	70
	Y _e	32	42	52	62	72	82

SPROCKES for the series NMEC508



Teeth nr.	Dp [mm]	Do [mm]	A [mm]	B [mm]	Available standard holes	
					Square [mm]	Ø round + set-screw UNI
6	101,6	88,5	40	31,0	40x40	20 - 25 - 30
8	132,7	122,4	40	31,0	40x40	20 - 25 - 30
10	164,4	156,5	40	31,0	40x40	20 - 25 - 30
12	196,3	189,7	40	31,0	40x40	20 - 25 - 30

Standard material: nylon PA6 fiberglass.
It is possible to supply sprocket with any number of teeth or any material by CNC machining

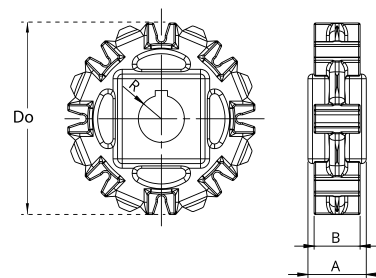
Part number NSEC508 -R 30 -Z8

Type _____

Hole type: R = round / Q = square _____

Hole size (mm) _____

Number of teeth _____

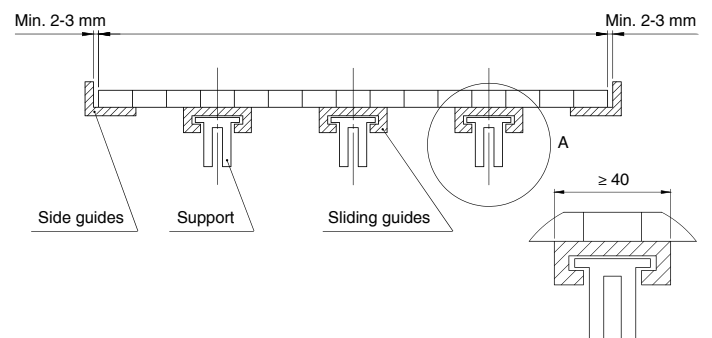


Belt width [mm]			200	300	400	500	600	700	800	900	1000	1100	1200	1400	1600
Number of sprockes	Drive shaft	Belt tension ≤ 50% of the capacity	2	2	3	3	4	5	5	6	6	7	8	9	10
		Belt tension = 100% of the capacity	2	3	5	6	7	8	10	11	12	13	15	17	20
Driven shaft			2	2	3	3	3	4	4	5	5	5	6	7	7
Sliding guides			2	3	3	3	4	4	5	5	5	6	6	7	8

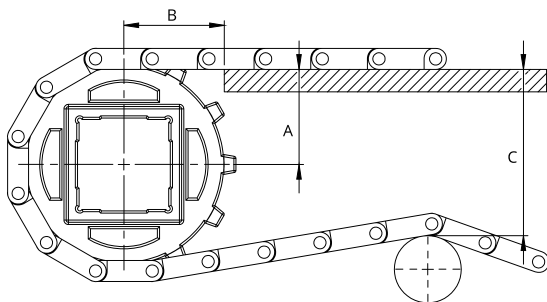
Belt width [mm]			1800	2000	2200	2400	2600	2800	3000
Number of sprockes	Drive shaft	Belt tension ≤ 50% of the capacity	11	12	13	15	16	17	18
		Belt tension = 100% of the capacity	22	25	27	30	32	35	37
Driven shaft			8	8	9	10	11	12	13
Sliding guides			9	9	10	11	12	13	13

Mounting

When mounting the sprockets, make sure that you have mounted all sprockets oriented in the same phase. Only axially lock the central sprocket and leave the other sprockets free to move axially



SPROCKES for the series NMEC508

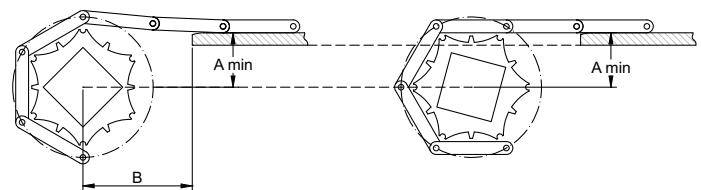
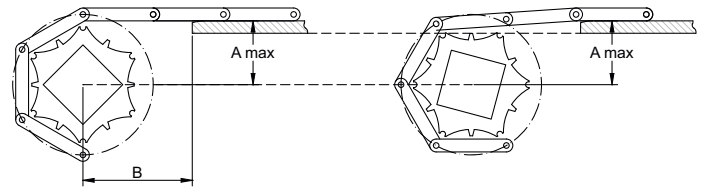


Series	Z [mm]	A _{max} [mm]	A _{min} [mm]	B1 [mm]	B2 [mm]	C _{max} [mm]
NMEC508	6	42,0	38,0	54	56	89
	8	58,0	56,0	62	56	122
	10	74,0	72,5	66	56	155
	12	90,5	89,0	73	56	187

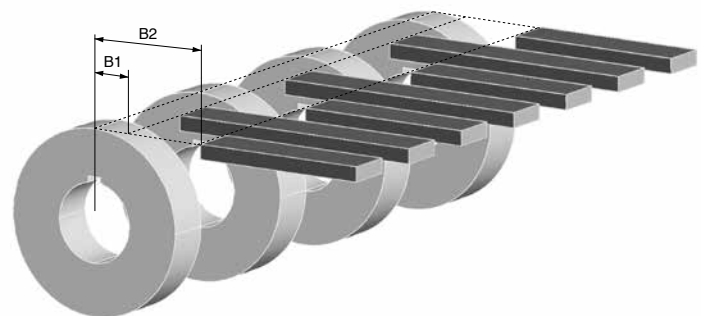
A_{max} = sliding surface position so that the height of the belt engaging the sprocket oscillates between the sliding surface height and a lower one. The height variation depends on the number of teeth and the pitch of the sprocket.

A_{min} = sliding surface position so that the height of the belt engaging the sprocket oscillates between the sliding surface height and a higher one. The height variation depends on the number of teeth and the pitch of the sprocket.

The choice of A dimensions depends on the items you have to carry. it is always suggested to make a chamfer at the end of the sliding guides.



In order to avoid any subsidence of the belt in the area between the guiding strip and the sprockets, it is possible to locate the guides between the sprockets. Two minimum B1 and B2 dimensions are defined.



PITCH 50,8 mm / 2"

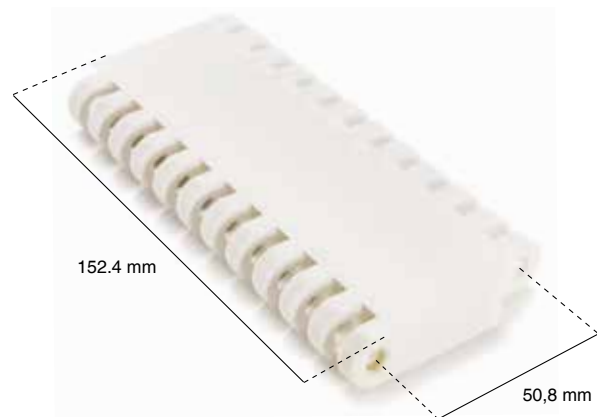
Belt type: closed flat top surface
Pin diameter: Ø 7 mm
Open area: 0%
Hole openings: -
Minimum width: 152,4 mm
Thickness: 16 mm
Accessories: -
Food Certification: FDA - EU



Standard executions

Belt material	Belt color	Pin
PP	White - blue	PP
PE	White - blue	POM
POM	White - blue	PA

Other materials and colors are available upon request.



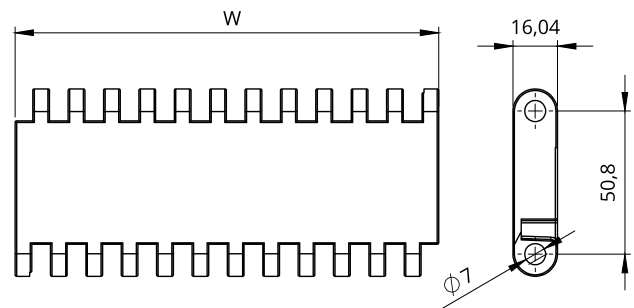
Belt material	Pin material	Belt performance [N/m]	Temperature range [°C]	Certification	Weight [kg/m²]
PP	PP	26970	+5 ÷ +90	FDA - EU	7,80
PE	PE	24080	-73 ÷ +66	FDA - EU	8,60
POM	POM	40600	-43 ÷ +70	FDA - EU	12,20
POM	PA	43400	-40 ÷ +80	FDA - EU	12,00
POM	PP	35300	+5 ÷ +70	FDA - EU	12,00

PP = Polypropylene - PE = Polyethylene - POM = Acetal Resin - PA = Polyamide

Belt width [W]

Minimum [mm]	Standard increment [mm]	Special increment [mm]	Width tolerance* [mm]
152,4	Multiple: 76,2	Multiple: 38,1	+/-2 up to 300
			+/-3 up to 600
			+/-4 more than 600

*It is advisable to consider dimensional variations in width based on operating temperatures and humidity when the belt is made of polyamide.



Part number

NMHP 508 P22 -PO -W

Type
 Pitch
 Closed flat top surface

Belt color: W = white / B = blue
 Belt material:
 PO = POM - Acetic Acid / PP = Polypropylene
 PE = Polyethylene / PA = Polyamide

NMHP508FG

PITCH 50,8 mm / 2"

STRAIGHT MODULAR BELTS

Belt type: open flat surface flush grid

Pin diameter: Ø 7 mm

Open area: 36%

Hole openings: 3,5x18,5 mm

Minimum width: 152,4 mm

Thickness: 16 mm

Accessories: -

Food Certification: FDA - EU

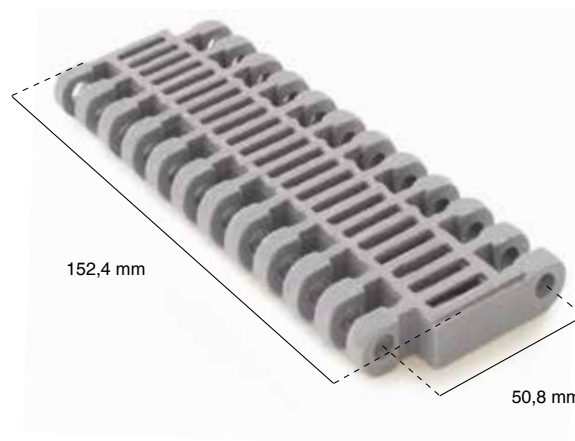
Standard executions

Belt material	Belt color	Pin
PP	Grey	PP
PE	White	POM
POM	Blue	PA

Other materials and colors are available upon request.

Belt material	Pin material	Belt performance [N/m]	Temperature range [°C]	Certification	Weight [kg/m ²]
PP	PP	27000	+5 ÷ +90	FDA - EU	6,7
PE	PE	24000	-73 ÷ +66	FDA - EU	7,4
POM	POM	39500	-43 ÷ +70	FDA - EU	10,9
POM	PA	42000	-43 ÷ +70	FDA - EU	10,60
POM	PP	34000	-43 ÷ +70	FDA - EU	10,60

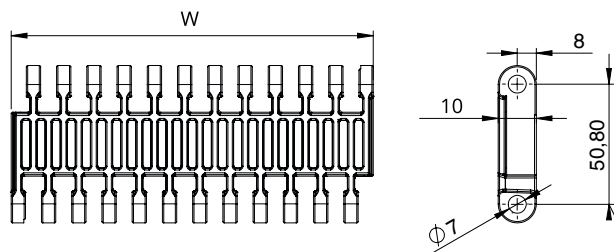
PP = Polypropylene - PE = Polyethylene - POM = Acetal Resin - PA = Polyamide



Belt width [W]

Minimum [mm]	Standard increment [mm]	Special increment [mm]	Width tolerance* [mm]
152,4	Multiple: 76,2	Multiple: 38,1	+/-2 up to 300
			+/-3 up to 600
			+/-4 more than 600

*It is advisable to consider dimensional variations in width based on operating temperatures and humidity when the belt is made of polyamide.



Part number

NMHP 508 FG -PO -W

Type

Pitch

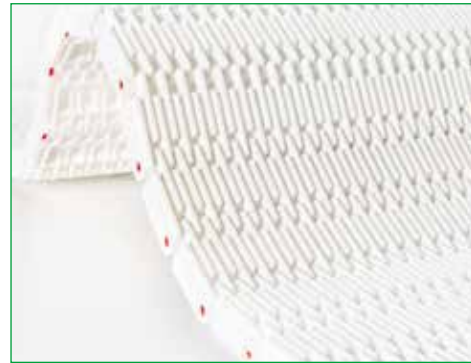
Open flat surface flush grid

Belt color: W = white / B = blue / G = grigia

Belt material:
PO = POM - Acetic Acid / PP = Polypropylene
PE = Polyethylene / PA = Polyamide

PITCH 50,8 mm / 2"

Belt type: open surface rised rib
Pin diameter: Ø 7 mm
Open area: 36% (bore size max 3,5x18,5 mm)
Surface contact with the product: 25%
Minimum width: 152,4 mm
Thickness: 24 mm
Accessories: comb
Food Certification: FDA - EU



Standard executions

Belt material	Belt color	Pin
PP	White - blue	PP
POM	White - blue	PA

Other materials and colors are available upon request.

Belt material	Pin material	Belt performance [N/m]	Temperature range [°C]	Certification	Weight [kg/m²]
PP	PP	26050	+5 ÷ +90	FDA - EU	8,90
POM	POM	39500	-43 ÷ +70	FDA - EU	13,50
POM	PA	42200	-40 ÷ +80	FDA - EU	13,20
POM	PP	34350	+5 ÷ +70	FDA - EU	13,20

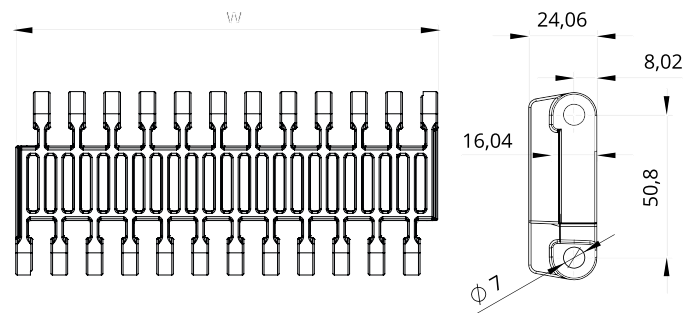
PP = Polypropylene - PE = Polyethylene - POM = Acetal Resin - PA = Polyamide



Belt width [W]

Minimum [mm]	Standard increment [mm]	Special increment [mm]	Width tolerance* [mm]
152,4	Multiple: 76,2	Multiple: 38,1	+/-2 up to 300
			+/-3 up to 600
			+/-4 more than 600

*It is advisable to consider dimensional variations in width based on operating temperatures and humidity when the belt is made of polyamide.



Part number

NMHP 508 RR -PO -W

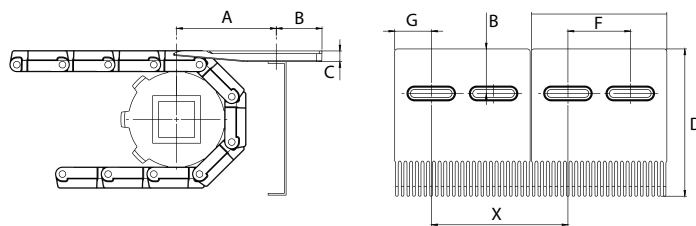
Type
 Pitch
 Open surface rised rib

Belt color: W = white / B = blue

Belt material:
 PO = POM - Acetic Acid / PP = Polypropylene
 PE = Polyethylene / PA = Polyamide

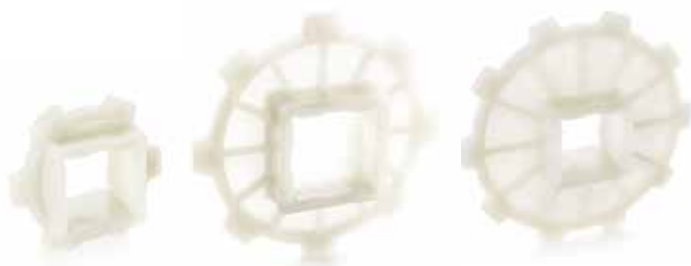
NMHP508 type accessories

Comb for belt type NMHP508RR



Quote	A	B	C	D	E	F	G	X
[mm]	105-115	25,0	12,5	146,0	150,0	75,0	37,5	155,0

Sprockets for the series HP508



Teeth nr.	Dp [mm]	Do [mm]	A [mm]	B [mm]	Available standard holes	
					Square [mm]	Ø round + set-screw UNI
6	101,6	94,6	40	8,5	40x40	20 - 25 - 30
8	132,7	125,0	40	8,5	40x40	20 - 25 - 30
10	164,4	159,0	40	8,5	40x40	20 - 25 - 30
12	196,3	192,0	40	8,5	40x40	20 - 25 - 30

Standard material: nylon PA6 fiberglass.
It is possible to supply sprocket with any number of teeth or any material by CNC machining

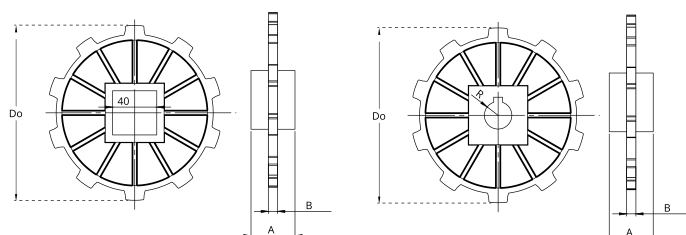
Part number NSHP508 -R 25 -Z6

Type _____

Hole type: R = round / Q = square _____

Hole size (mm) _____

Number of teeth _____



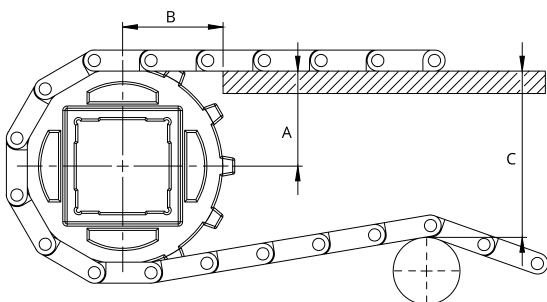
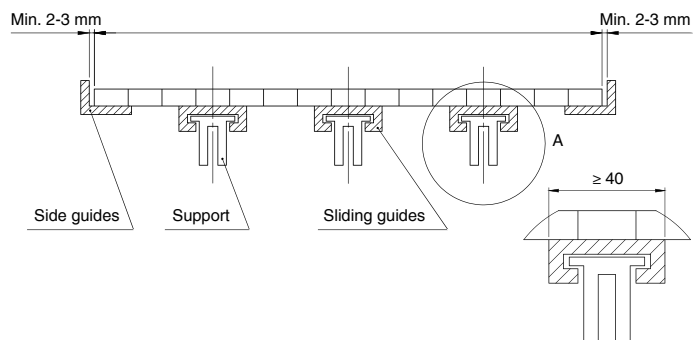
Belt width [mm]			152,4	228,6	304,8	381	457,2	533,4	609,6	685,8	762	838,2	914,4	990,6	1066,8	1143	1219,2	1295,4	1371,6	1447,8
Number of sprockes	Drive shaft	Belt tension ≤ 50% of the capacity	2	2	2	3	3	4	4	5	5	5	6	6	7	7	8	8	9	9
		Belt tension = 100% of the capacity	1	2	3	4	5	6	7	8	9	10	11	12	13	14	15	16	17	18
Driven shaft			2	2	2	3	3	3	3	3	4	4	4	4	5	5	6	6	6	7
Sliding guides			2	2	3	3	3	4	4	4	5	5	5	5	6	6	6	7	7	7

Belt width [mm]			1524	1600,2	1676,4	1752,6	1828,8	1905	1981,2	2057,4	2133,6	2209,8	2286	2514,6	2743,2	2971,8	3200,4	3429	3657,6	3810
Number of sprockes	Drive shaft	Belt tension ≤ 50% of the capacity	9	10	10	11	11	12	12	13	13	13	14	15	17	18	19	21	22	23
		Belt tension = 100% of the capacity	19	20	20	21	22	23	24	25	26	27	28	31	34	37	40	42	45	47
Driven shaft			7	7	8	8	9	9	9	10	10	10	11	11	12	13	14	15	16	17
Sliding guides			8	8	8	9	9	9	9	10	10	10	11	12	12	13	14	15	16	17

SPROCKES for the series NMHP508

Mounting

When mounting the sprockets, make sure that you have mounted all sprockets oriented in the same phase.
Only axially lock the central sprocket and leave the other sprockets free to move axially

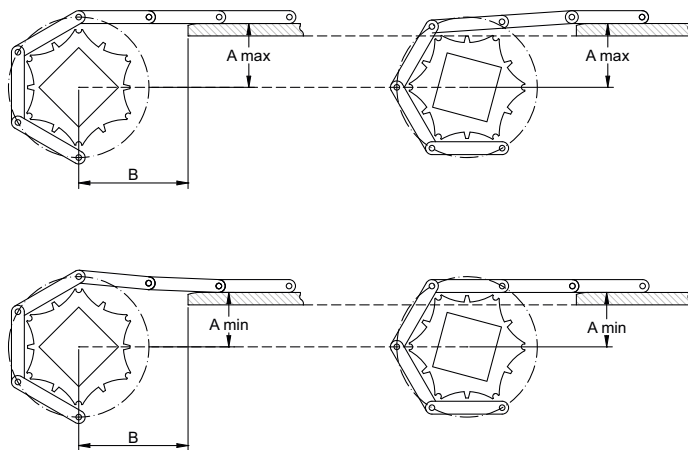


Series	Z [mm]	A _{max} [mm]	A _{min} [mm]	B1 [mm]	B2 [mm]	C _{max} [mm]
NMHP508	6	42,0	38,0	54	56	89
	8	58,0	56,0	62	56	122
	10	74,0	72,5	66	56	155
	12	90,5	89,0	73	56	187

A_{max} = sliding surface position so that the height of the belt engaging the sprocket oscillates between the sliding surface height and a lower one. The height variation depends on the number of teeth and the pitch of the sprocket.

A_{min} = sliding surface position so that the height of the belt engaging the sprocket oscillates between the sliding surface height and a higher one. The height variation depends on the number of teeth and the pitch of the sprocket.

The choice of A dimensions depends on the items you have to carry.
it is always suggested to make a chamfer at the end of the sliding guides.



In order to avoid any subsidence of the belt in the area between the guiding strip and the sprockets, it is possible to locate the guides between the sprockets. Two minimum B1 and B2 dimensions are defined.

